

breezeYachting.swiss



Mayra 50m 'EUPHORIA II'

EUR 19'500'000 excl. VAT | 50m | 2016

KEY POINTS

- Sleeps up to 12 guests in 5 cabins
- Gym and jacuzzi on the skydeck
- Exterior and Interior design by renowned Ken Freivokh
- Stabilizers at anchor and underway
- Solid Steel hull with Aluminium superstructure
- RINA Commercial classified with LY2



SPECIFICATIONS

Builder:	Mayra
Model:	50m
Model Year:	2016
Flag:	Marshall Islands
Hull/Superstructure:	Steel
Designer:	Ken Freivokh Design
Length overall:	49.56 m
Beam:	8.45 m
Draft:	2.7 m
Displacement:	342.067 Light Ship
Gross Tonnage:	467 t
Guest Cabins:	5
Guest Cabin Configuration:	Master, 2 x VIP, 2 x Twin with 2 Pullman
Heads:	7
Guests:	12
Crew:	9 in 5 cabins (4 x Twin cabins + 1 x Captain's cabin + Crew mess)
Engines:	2 x CAT C32 ACERT
Engine power:	2 x 1600 HP
Engine hours:	Prt 1064 h; Stbd 1095 h (02/2024)
Fuel Type:	Diesel
Gearbox:	ZF
Generators:	Leroy Somer LSAM 44.2S7 C 6/4
Generators hours:	Prt 2790 h; Stbd 2511 h (02/2024)
Max Speed:	16 kn
Cruising Speed:	12 kn
Range:	4500 nm
Consumption:	300 L/h @ 12 kn
Fuel Tank:	74000L + Day Tanks 2 X 2300 L
Water Tank:	9300 l
Gray Water Tank:	2 X 3341 L
Black Water Tank:	2 X 2666 L





breezeYachting.swiss

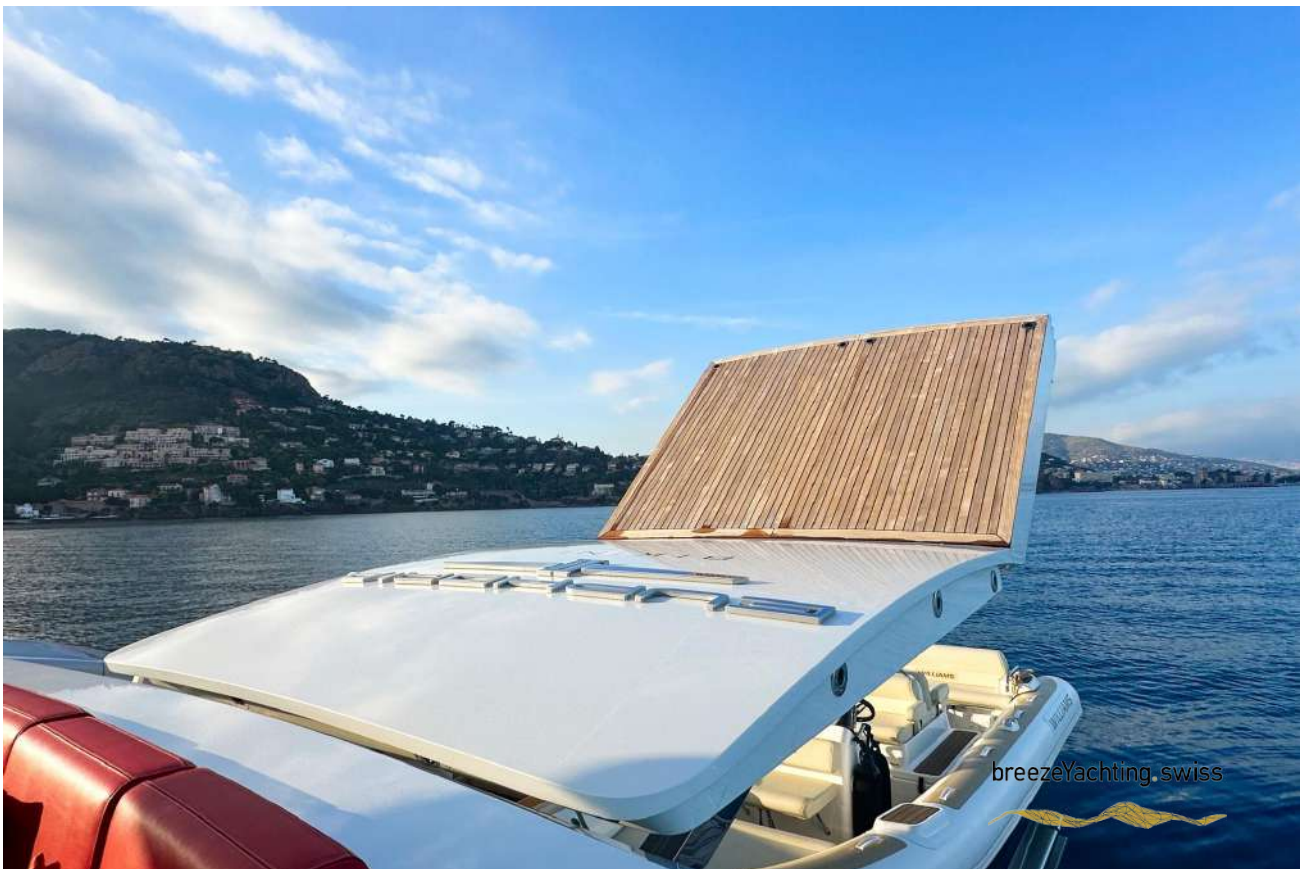






breezeYachting.swiss









breezeYachting swiss







breezeYachting.swiss

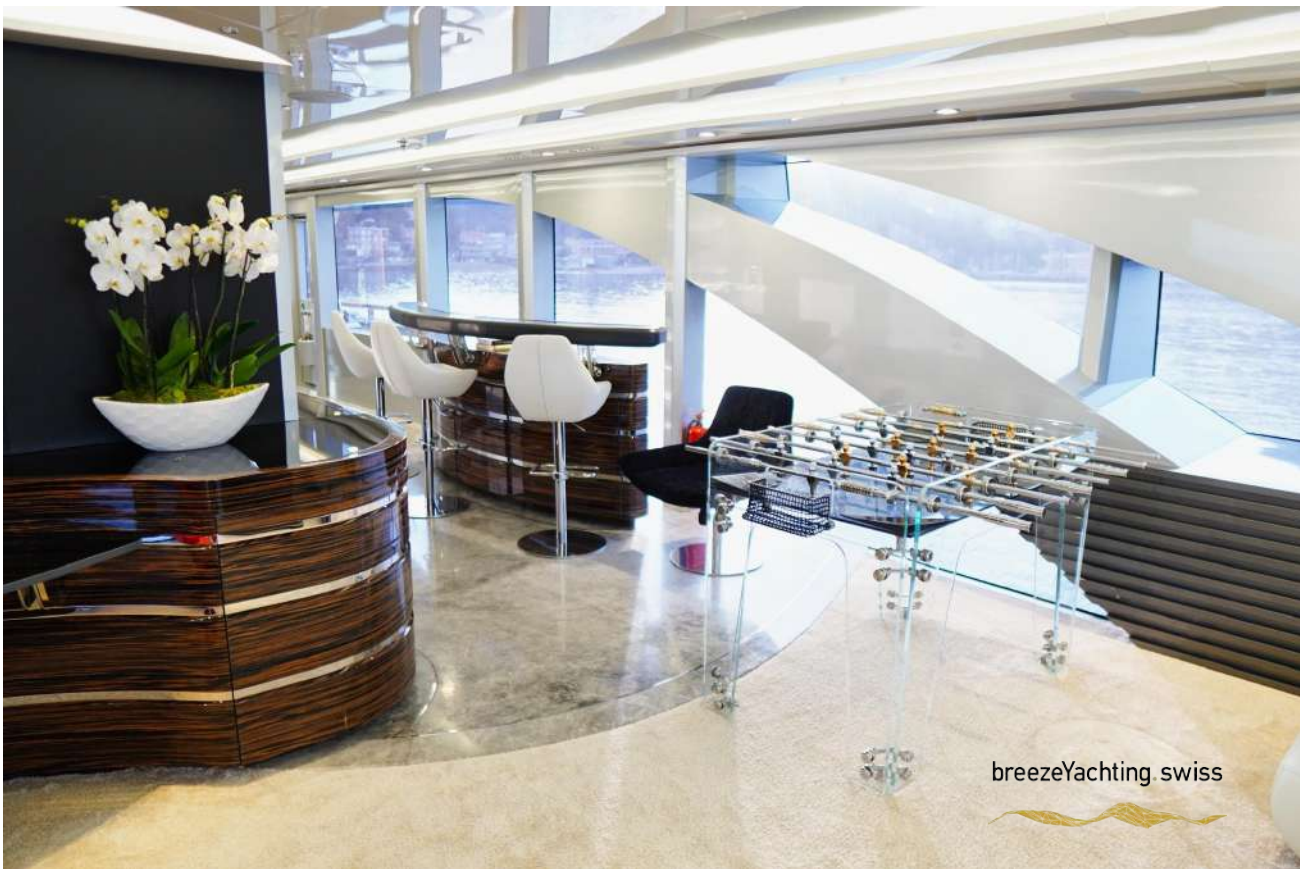






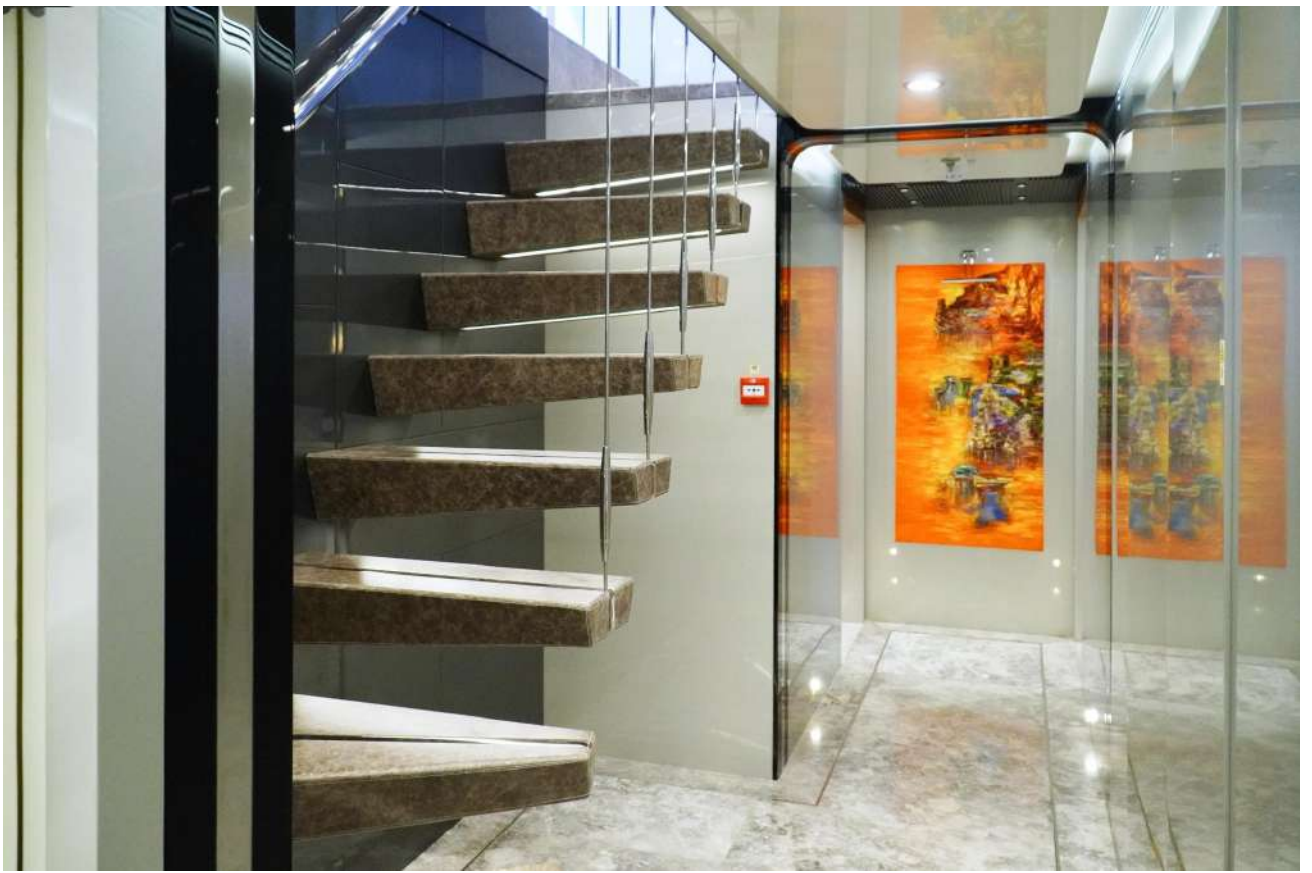


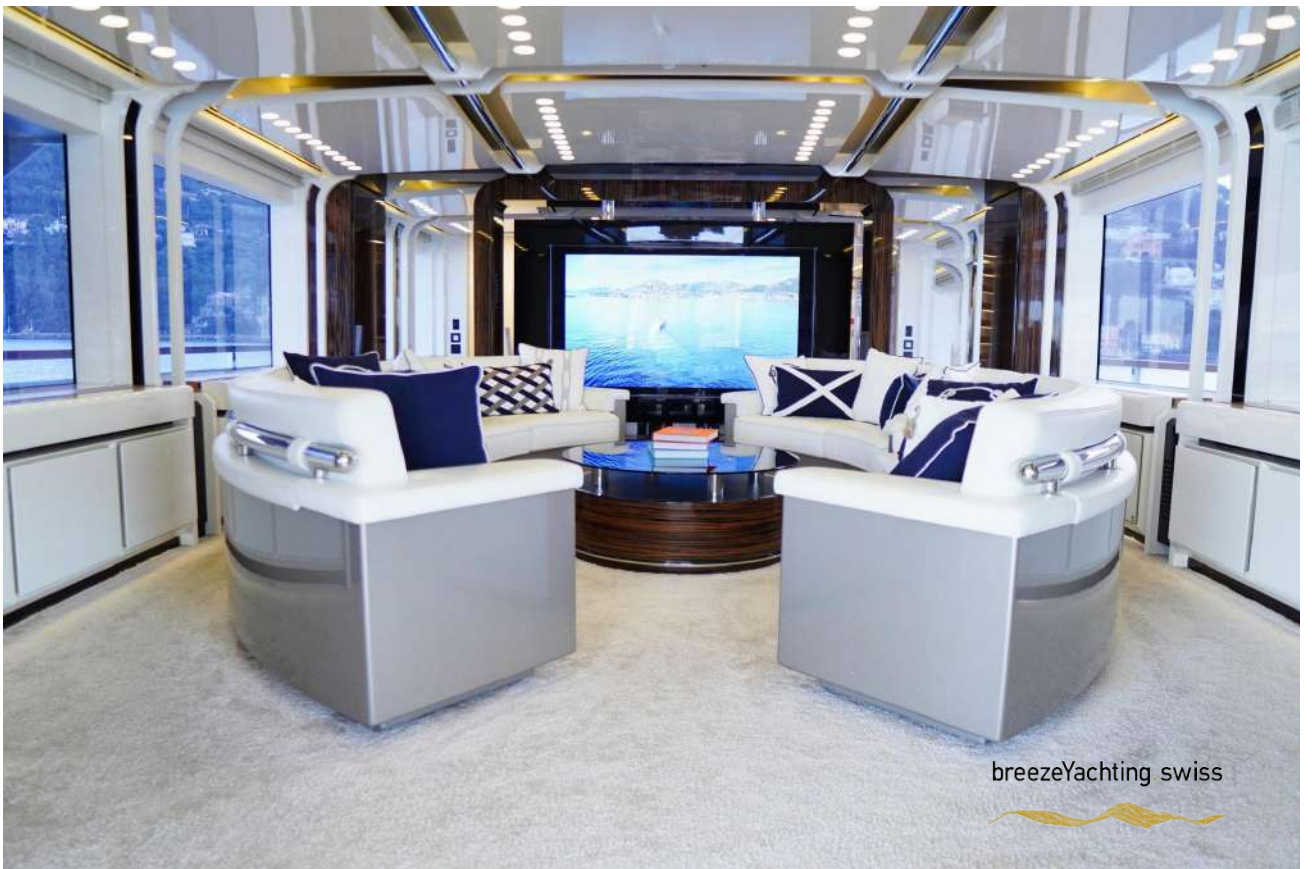




breezeYachting.swiss

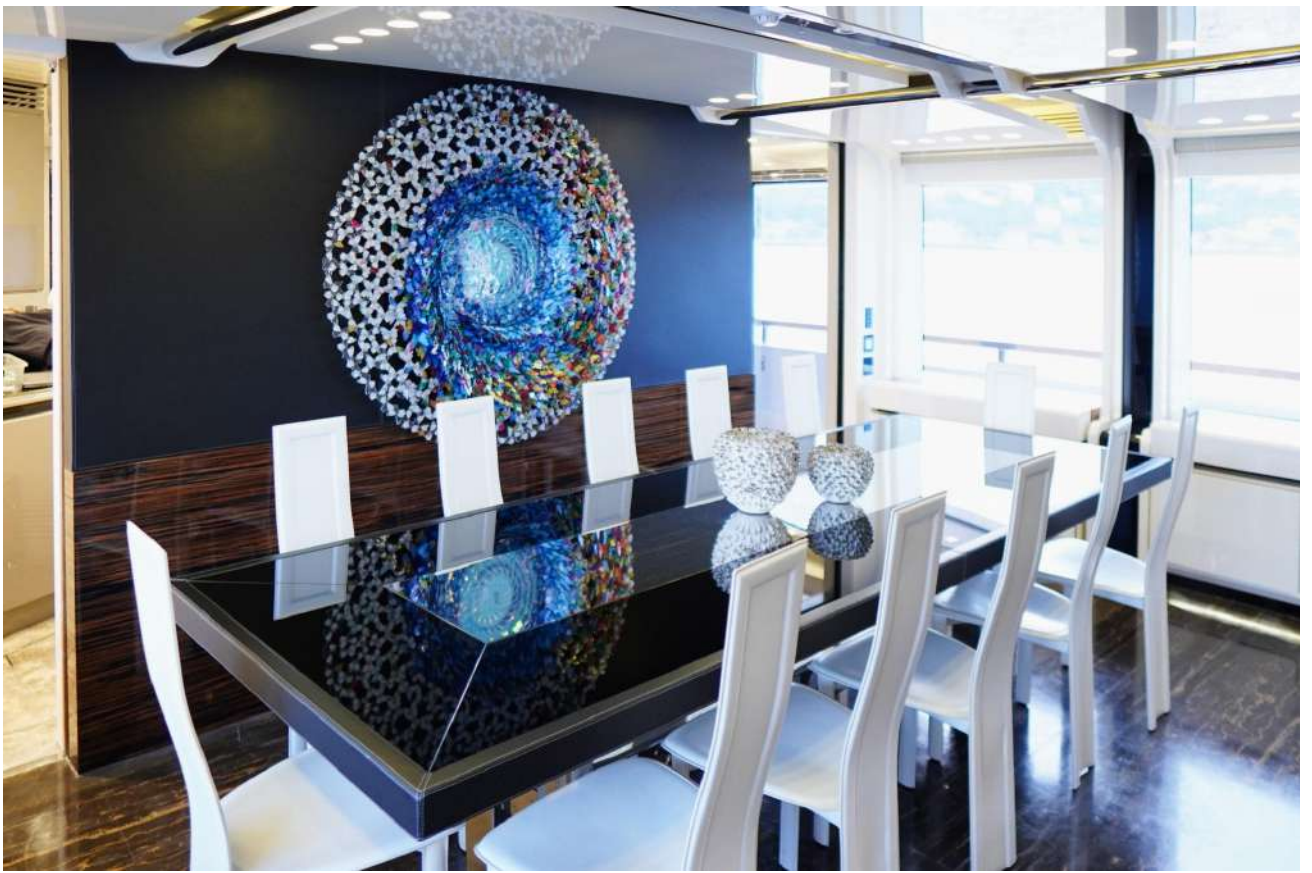


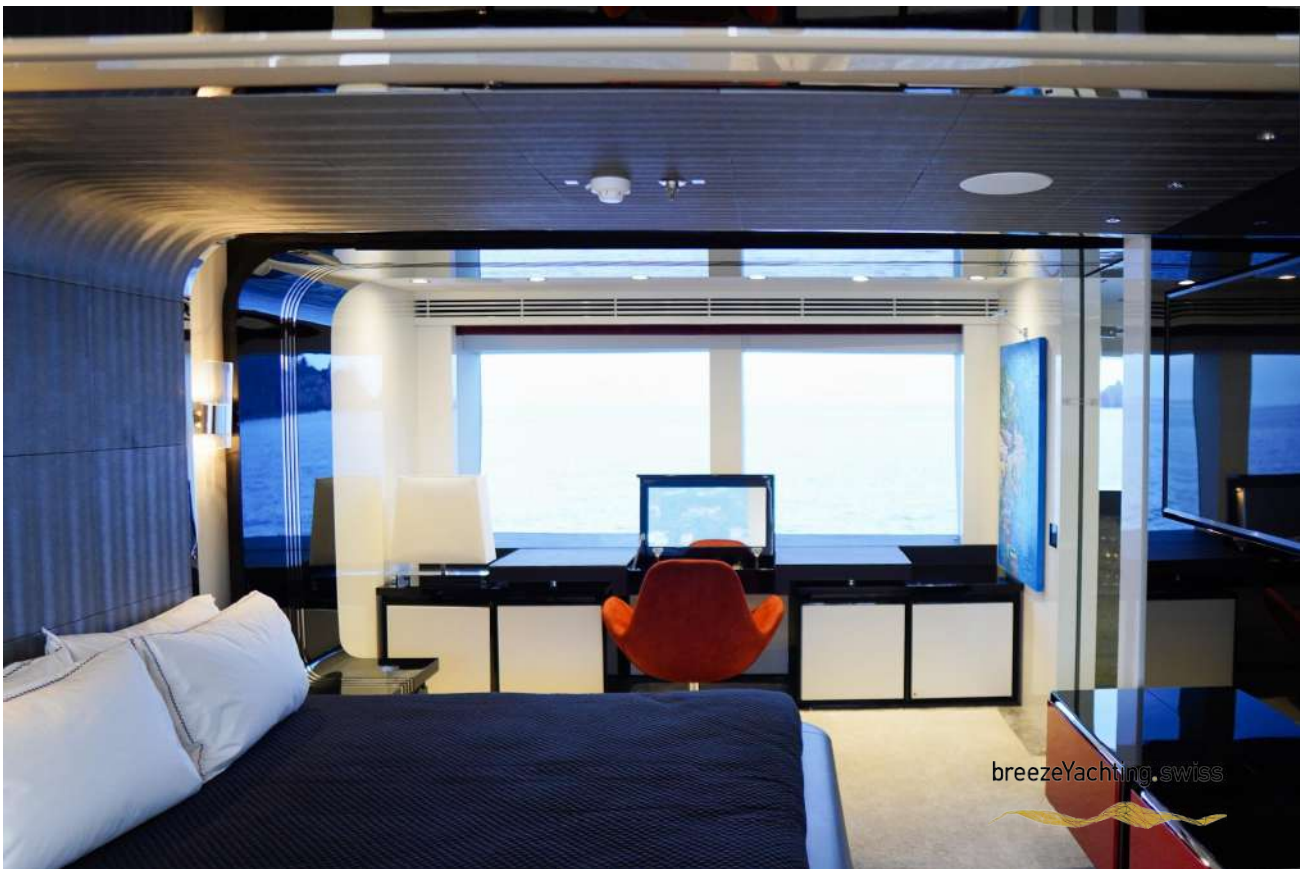




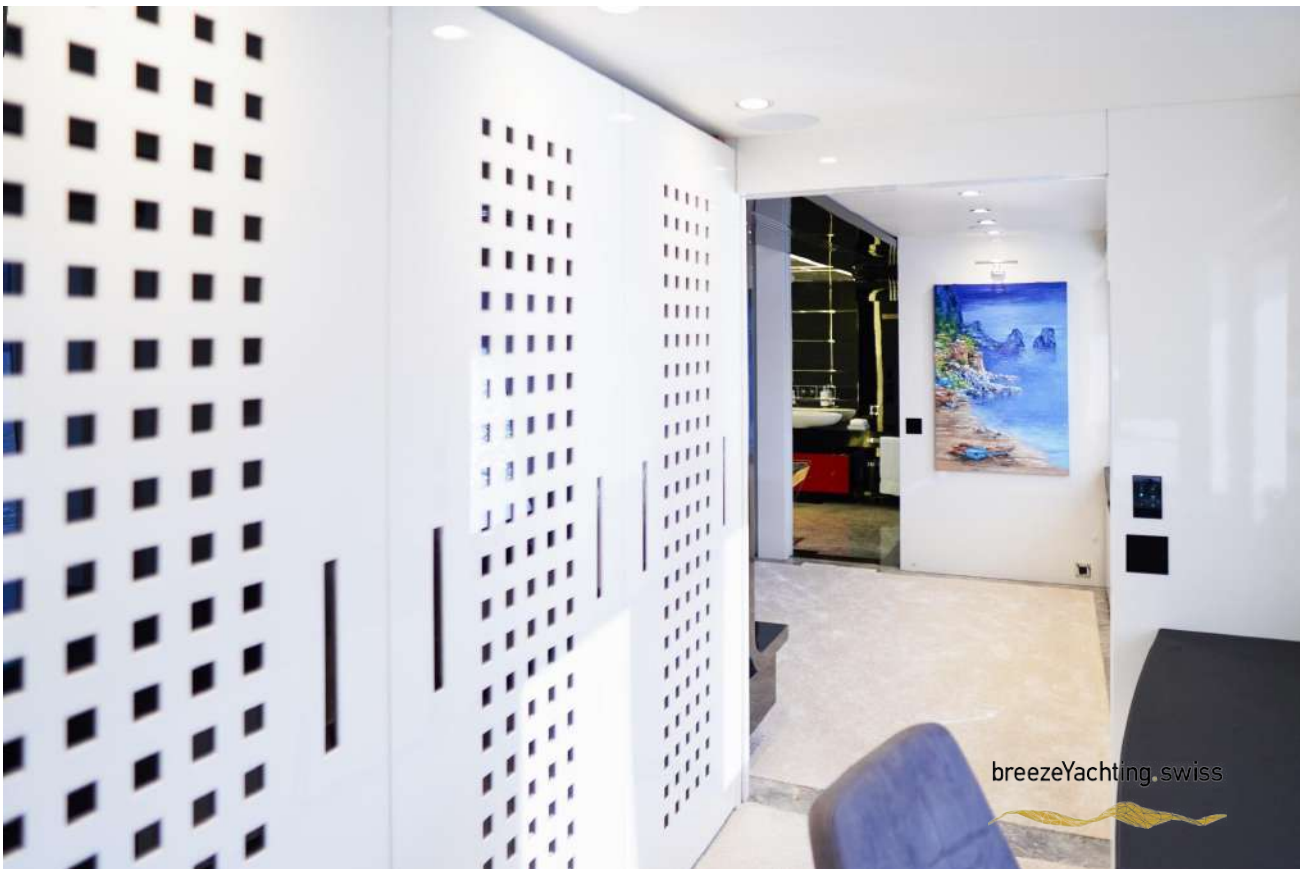
breezeYachting swiss













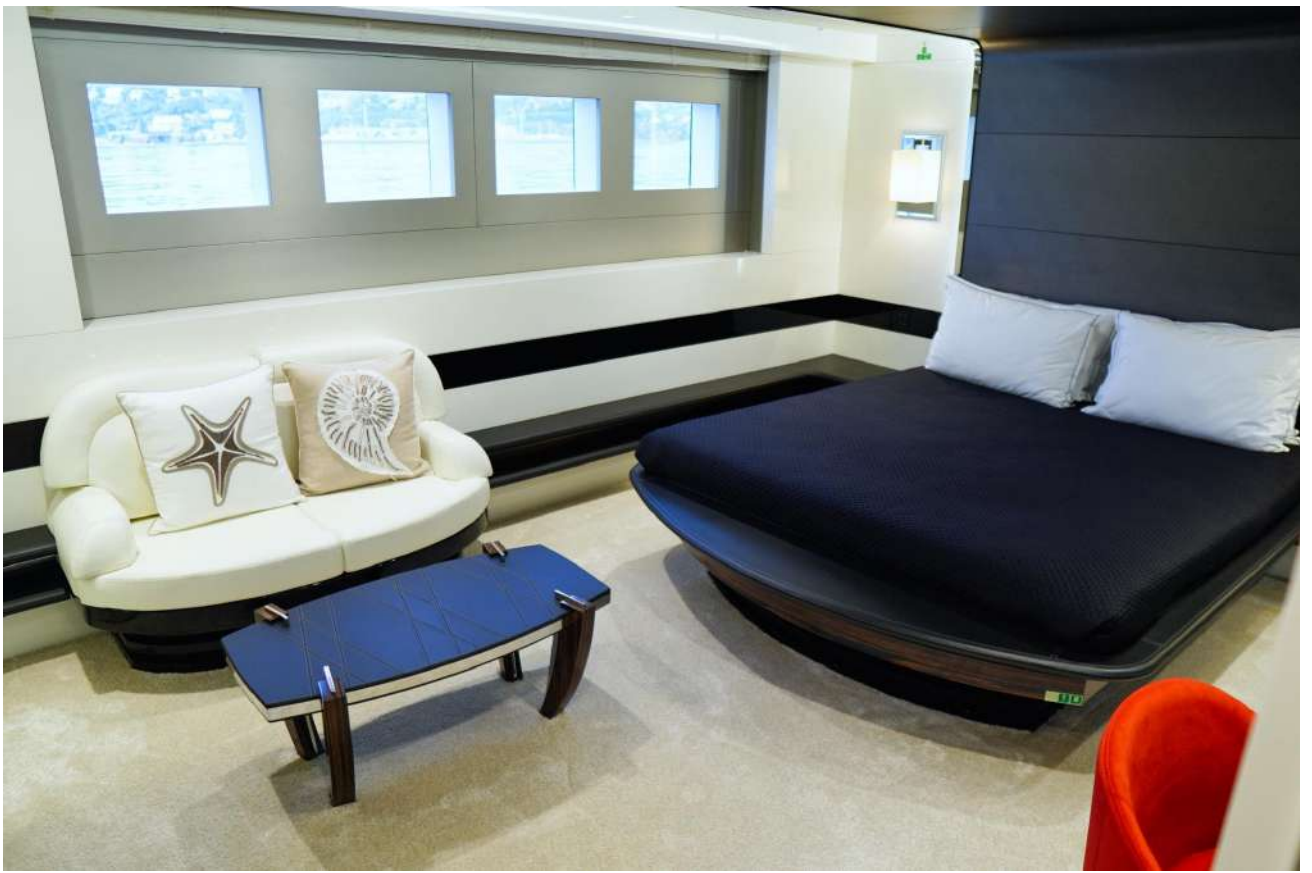


breezeYachting swiss









breezeYachting swiss









breezeYachting swiss





breezeYachting.swiss





EQUIPMENT

Communication & Bridge

- VHF DSC Controller: 2 x Furuno FM-8900S
- UHF: FS-2575C
- Inmarsat C: 2 x F18
- AIS: Furuno FA-150
- NAVTEX: Furuno NX-700
- Autopilot: NAVIPILOT 4000
- GPS: Furuno GP-150
- Gyro Compass: SPERRY MARINE
- Radar: 2 x Furuno
- Depth Sounder: FURUNO FE-800
- Wind Instruments: FURUNO RD-33
- Searchlight: JABSCO
- EPIRB: 1 Sun Deck
- Night Vision: 2 x
- Intercom

Galley & Laundry Equipment

- Cooking Equipment
- Microwave
- Extractor Fan
- Dishwasher
- 2 x Refrigerator
- Freezer
- Ice Maker
- 2 x Washing Machine
- Dryer

Deck Equipment

- 2 x Hydraulic Anchor Windlass
- 2 x Aft Warping Capstans
- 2 x Anchors
- 2 x Anchor Chains (5 Shackles)
- Boat Crane & Davits
- Passerelle



EQUIPMENT

Safety & Fire Protection

- Security Equipment
- Cameras
- Monitors
- Life Jackets (Safety List)
- 4 x Life Rafts - 25 pax
- Medical Equipment
- 3 x Emergency VHF
- Smoke Sensors
- Fire Control System: Marine Elec Phenix V2
- Fire Extinguishers
- Fire Alarms

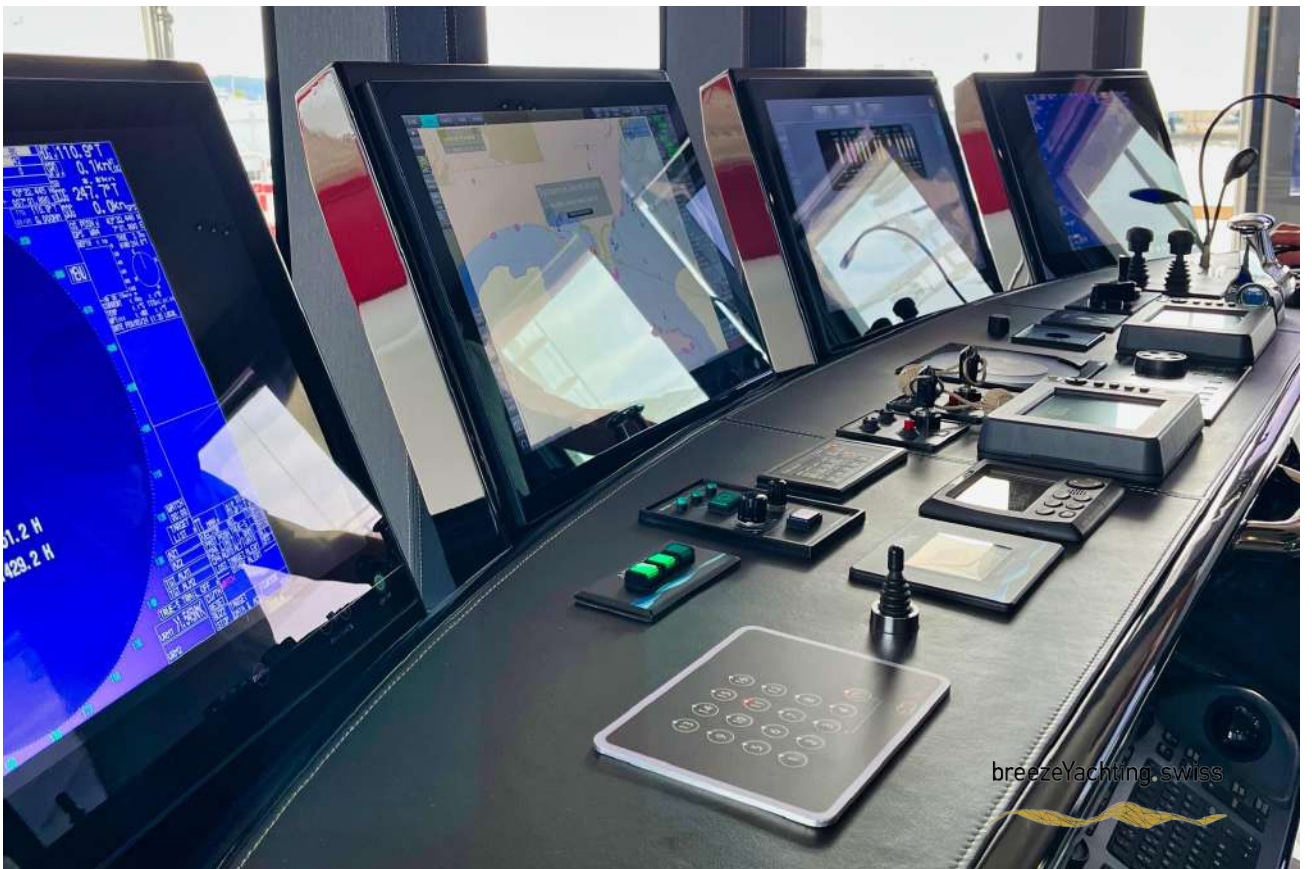
Accommodation

- Flybridge: Upper Salon
- Main Deck: Master cabin, Dinning, Salon
- Lower Deck: 2 x VIP cabins + 2 x Twin cabins
- Crew: 4 Twin cabins + Captain's cabin + Crew mess

Tenders & Toys

- Williams Tender 625
- 2 x F5 SeaBob
- 2 x inflatable kayaks
- 2 x inflatable paddle boards
- Wake board
- Water ski
- E-foil surf
- Donuts









breezeYachting.swiss





breezeYachting swiss



LAYOUTS





CORNELIUS KISTLER

Founder & CEO

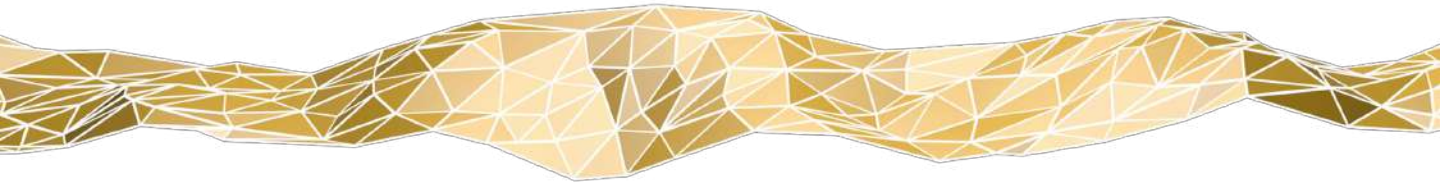
 WHATSAPP ME

m. +41 79 702 7000

ck@breezeyachting.swiss

breezeYachting.swiss

WE SPEAK YACHTING. LET'S TALK.



Switzerland ● Malta ● Spain ● Monaco

www.breezeyachting.swiss

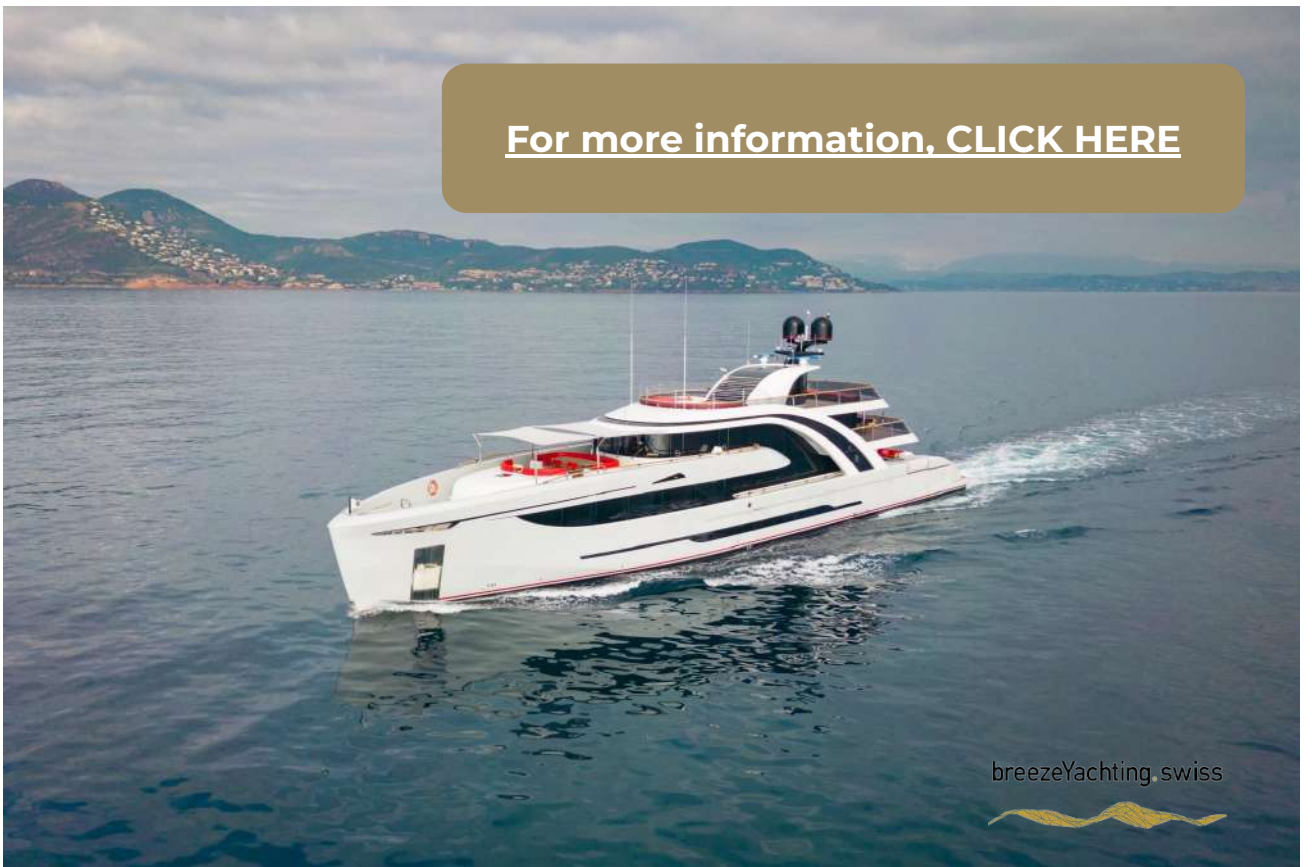
DISCLAIMER

The company offers the details of this vessel in good faith but cannot guarantee or warrant the accuracy of this information nor warrant the condition of the vessel. A buyer should instruct his agents, or his surveyors, to investigate such details as the buyer desires validated.

This vessel is offered subject to prior sale, price change or withdrawal without notice.



[For more information, CLICK HERE](#)



breezeYachting.swiss

