

breezeYachting.swiss



# Lynx 33.5m **'ROBBIE BOBBY'**

€7'600'000 excl. VAT | 33.5m | 2013/2018

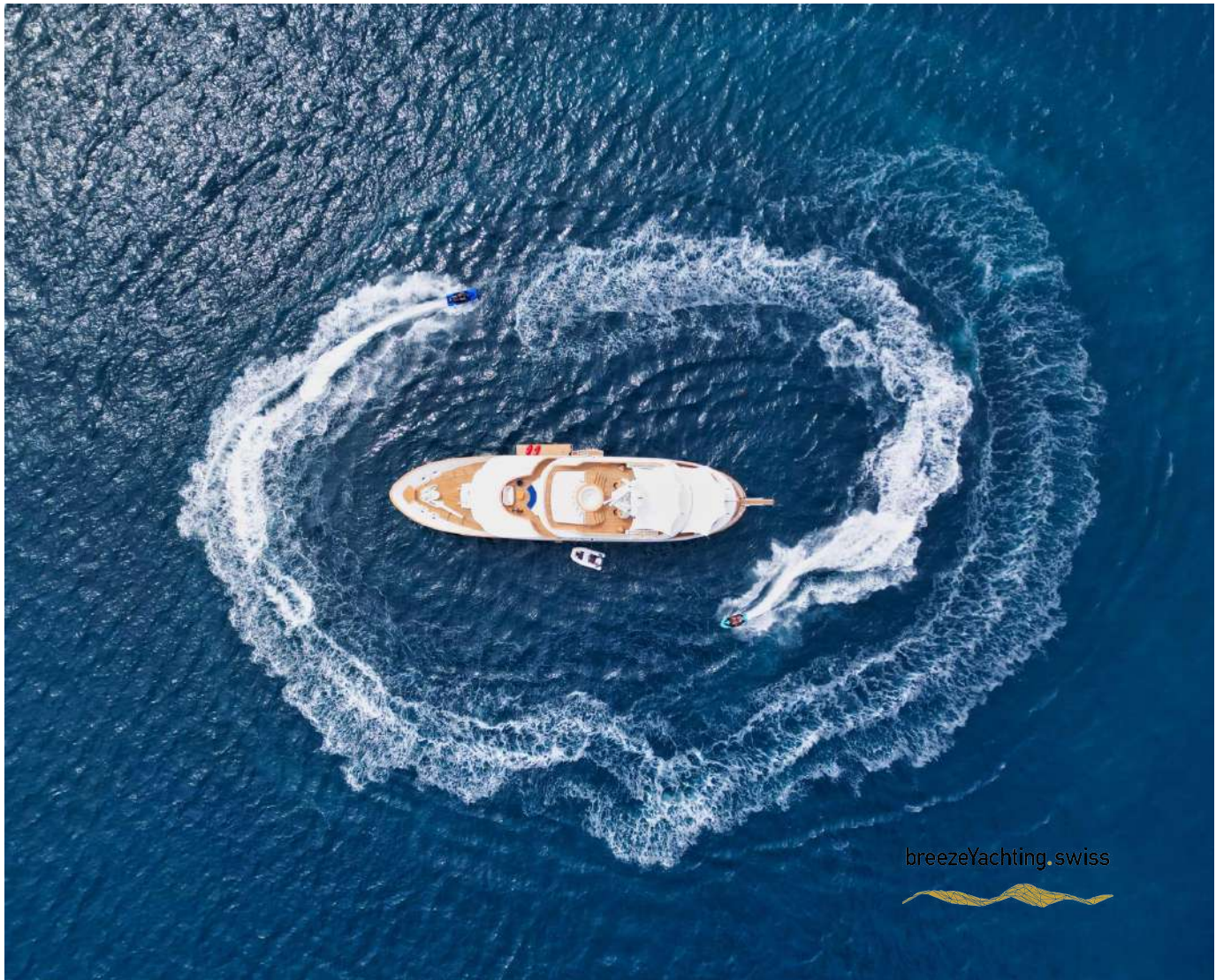


This solid full displacement yacht with a steel hull and aluminum superstructure was built by Lynx shipyard in the Netherlands and delivered in 2013.

Along with her elegant profile with a canoe stern allowing more comfortable and smooth cruising, she surprises with a modern and sophisticated interior, big windows, high ceilings and lots of space.

With a large beam of 8m allowing a facility of a 40m+ yacht, Robbie Bobby underwent an extensive refit to offer even more volume including a large sundeck with a new elevated jacuzzi and a bar with BBQ. The natural modern atmosphere can be enjoyed everywhere onboard. The retractable windows in the saloon and master cabin allow one to enjoy the sea breeze by opening them entirely.

Her 3 spacious decks offer generous exterior space. Thanks to her intelligent layout, this yacht provides a number of different areas for entertainment and relaxation, along with separate spaces for privacy. Sidewalks go around all decks, allowing you to enjoy the outside and have access inside from different angles.





# KEY POINTS

- Dutch built with steel hull and aluminium superstructure
- 10 year class survey works completed in 2023
- Big volume of 287GT
- Side garage convertible into a swim platform
- Eco-responsible: fresh & black water treatment, low fuel consumption
- Loaded with latest technologies and modern features



# SPECIFICATIONS

<b>Builder:</b>	Lynx Yachts
<b>Model:</b>	33.5m
<b>Year Built:</b>	2013
<b>Refit:</b>	2018
<b>Hull/Superstructure:</b>	Steel / Aluminium
<b>Deck material:</b>	Teak
<b>Exterior Designer:</b>	Diana Yacht Design
<b>Exterior Designer:</b>	Weber Yacht Design
<b>Flag:</b>	Malta
<b>Length overall:</b>	33.50 m
<b>Beam:</b>	8.00 m
<b>Draft:</b>	2.30 m
<b>Gross tonnage:</b>	287 GT
<b>Displacement:</b>	260 T
<b>Guests:</b>	12
<b>Staterooms:</b>	5
<b>Crew:</b>	6
<b>Engines:</b>	2 x Caterpillar C18 ACERT 600HP
<b>Engine Hours (Feb 2024):</b>	Port 5.054h, Starboard 4.994h
<b>Total Power:</b>	1200 HP
<b>Generators:</b>	2 x CATERPILLAR 55KW
<b>Generator Hours (Feb 2024):</b>	Port 13.329h, Starboard 11.497h
<b>Cruising Speed:</b>	11 knots
<b>Maximum Speed:</b>	12.5 knots
<b>Range:</b>	3200 nm @ 11 knonts
<b>Fuel tank:</b>	38,000 l
<b>Fresh water tank:</b>	6,600 l
<b>Black water tank:</b>	3060 l



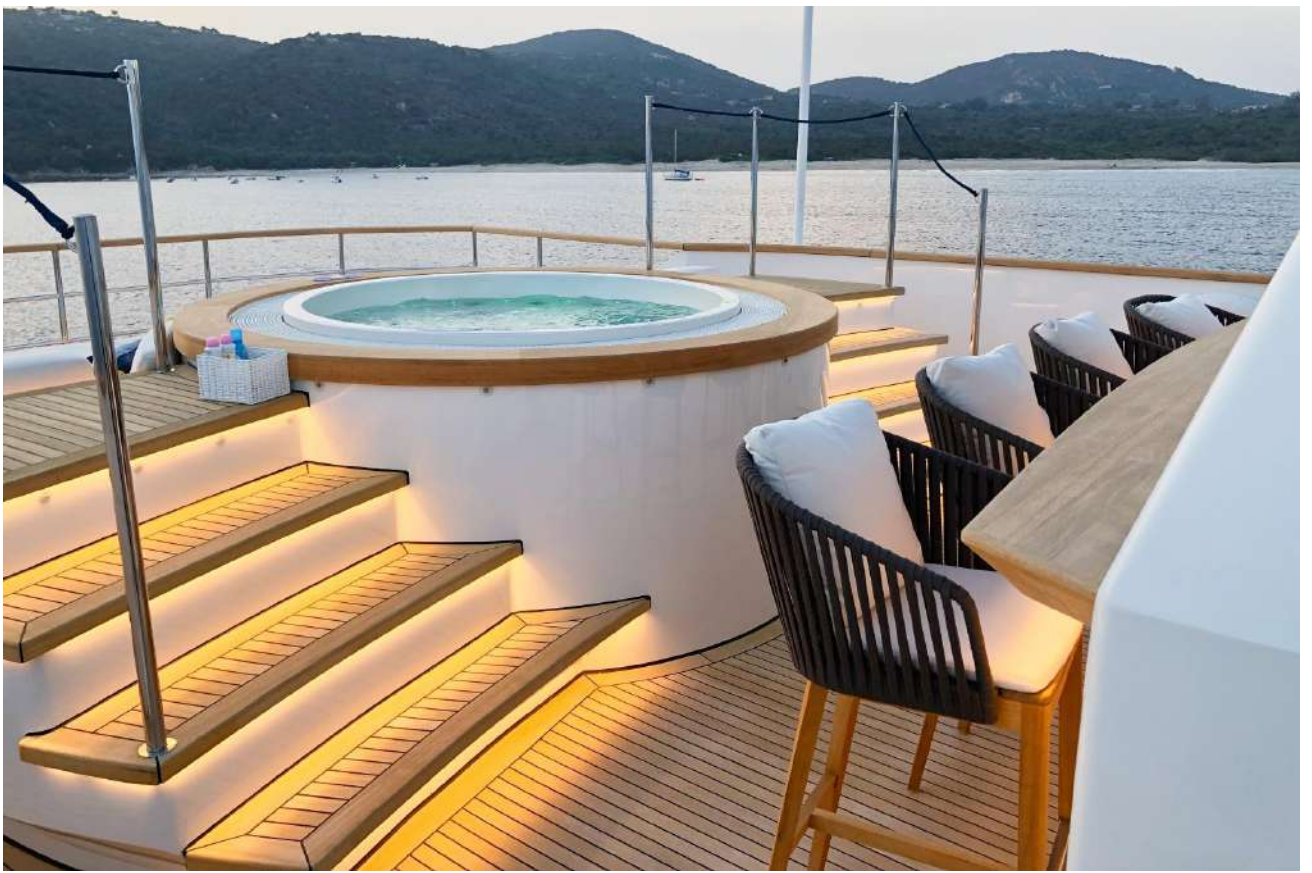
# LIST OF WORKS DONE

## during 10 year Class survey works

- Shafts pulled and checked
- Replacement of exhaust pipes of main engines
- All mechanical equipment serviced
- Fuel tanks cleaned
- Water tank cleaned and painted
- Full main engines service: changed all liquids, new exhaust pipes, new valves
- Generators: change cylinder block, pistons, crane shafts, new engines for generators , new exhaust stainless steel pipes
- Steering gear pump replacements
- Stabilisers full maintenance
- New Bluewater watermaker (250 liter/hour)
- Ventilation and air conditioning system cleaning and disinfection
- Hydraulic systems maintenance and service
- Bow thruster maintenance and service
- Garage door service , new Flexiteek on garage side door
- New propellers
- New Antifouling hull and propellers







breezeYachting swiss















breezeYachting.swiss



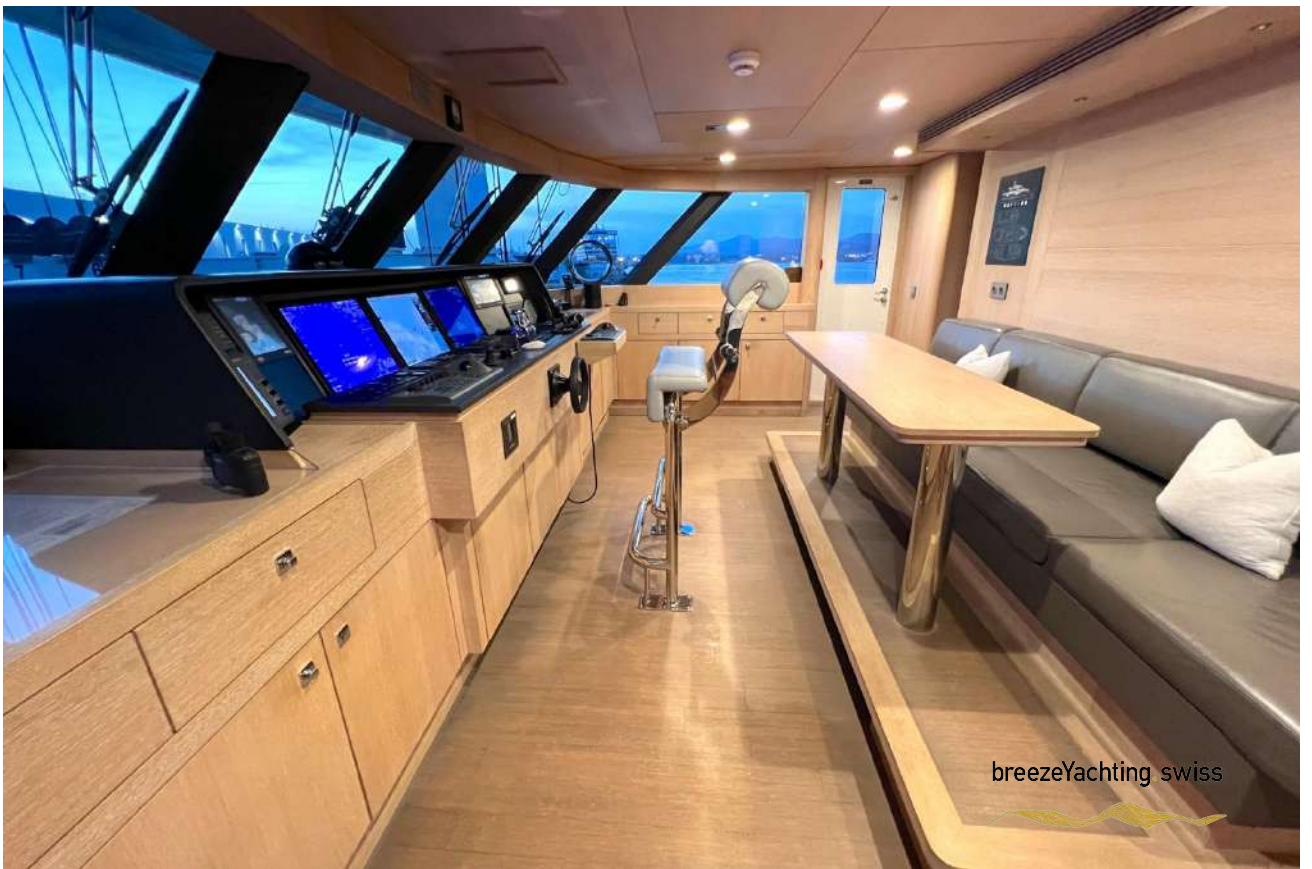


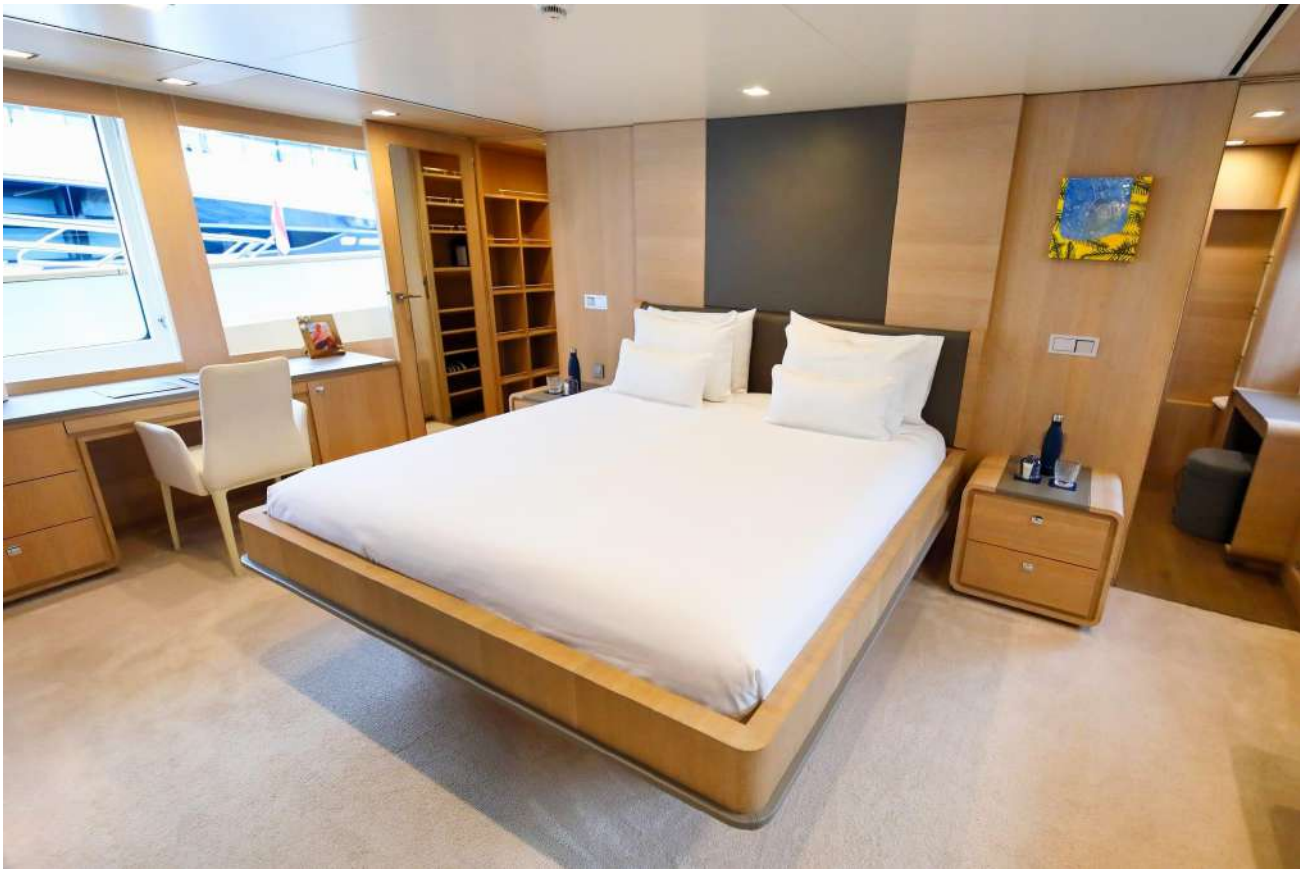


breezeYachting swiss













breezeYachting swiss











breezeYachting swiss







# EQUIPMENT

## Main Machinery

- Main Engines: 2 x CATERPILLAR C18 ACERT 600HP, 447 KW
- Engine Hours:  
Port - 5.054h (February 2024),  
Starboard - 4.994h (February 2024)
- Gear Boxes: 2 x Reint les WAF 2642
- Propellers: 2 x Exalto 1200mm

## Generators & Electricity

- Generators: 2 x CAT 4.4 51kW/64kVA
- Generator Hours:  
Port - 13.329h (February 2024),  
Starboard - 11.497h (February 2024)
- Electricity on board: 400V/230V 50 Hz
- Batteries: General service batteries 24V

## Auxiliary Machinery

- Steering System: Hydrosta
- Bow Thruster: Hydrosta 46kW
- Stabilisers: Zero speed Naiad 520 ship roll

## Fuel & Oil System

- Fuel Filters: 2 x Racor
- Fuel Pumps: Luitec SK 3302 LA 1340
- Oil Cleaner: Westfalia
- Oil Pumps: Handpump for Main engines + DG sumps only
- Sewage System: Hamann HL-cont Plus 02 Slim

## Fresh Water System

- Fresh Water Makers: 2 x Sea recovery Aquawhisperer 1800
- Fresh Water Filters: Sea Recovery
- Fresh Water Heater: ACV ETECH 15 Tri + 2x 200l boilers
- Fresh Water Pump: Luitec SK 3302 LA 1340

## AC & Ventilation System

- Air Conditioning: Heinen & Hopman + Domestic (Plant is Domestic)
- Air Compressor: Luitec 2x 50 litres





# EQUIPMENT

## Navigation Systems

- Radar: Furuno, RCU / 014
- Compass: Satellite and Magnetic
- Auto Pilot: Nautopilot, NP 60
- DGPS Furuno GP150
- GMDSS: Jotron TR20
- NAVTEX: Furuno NX 700

## Communication Systems

- Satellite: Furuno GP150
- INMARSAT: Sailor 6110
- VHF: Sailor RT 6222
- SART: Safe Sea 5100
- EPRIB: Safe Sea E100
- AIS: Furuno FA 150

## Deck Machinery & Equipment

- Anchors: 2 x Pool N HHP 180kg
- Anchor Chains: 2x 140 m U2 16mm stutlink
- Bollards: 4 x Stainless steel on aft deck
- 4x Stainless steel on foredeck
- Capstans: MUIR type Q2102-D04
- Cleats: Stainless steel
- Davits: 1x Feebe DC 25 SWL 600kg fixed on foredeck
- 1x Atlas 2000 mob. crane
- Gangway: Feebe hydraulic
- Winches: Muir

## Safety, Security, & Fire Fighting Equipment

- Alarm System: Custom VISAS alarm (fire/burglary/general)
- Fire Suppression: NOVEC system for ER
- Fire Pumps: Johnson Fres 65-155
- Life Rafts: 4 x 10 Persons with SOLAS "A"- pack
- Rescue Tender: Quicksilver 3.4m RIB Yamaha 25hp 4 stroke tiller steer



# EQUIPMENT

## Entertainment, Audio/Visual and IT Systems

- In general, there are TVs in all staterooms and salons with Apple TV boxes for streaming music and movies
- WIFI available throughout the whole yacht
- There is an additional 55" TV on a lift in the Sky lounge
- BOWERS & WILKINS SOUND SYSTEM ON ALL DECKS and PROFESSIONAL DJ SET

## Galley & Laundry Equipment

- Stove: Miele induction
- Oven: 1 x Siemens Combi steam oven
- Microwave Oven: 1 x Siemens
- Refrigeration: 2 x Liebherr
- Freezers: 3 x Siemens, 1 x Lieber
- Ice Maker: H & V located in the tender garage and skylounge
- Insinkerator: 1 x ISE
- Hood 2 x Siemens
- Dishwashers: 1 x Miele Jubilee, 1 x Hobart commercial
- Washing Machine: 2x Miele PW 5065
- Dryer: 2 x Miele PT 5135 C
- Trash Compactor: Broan



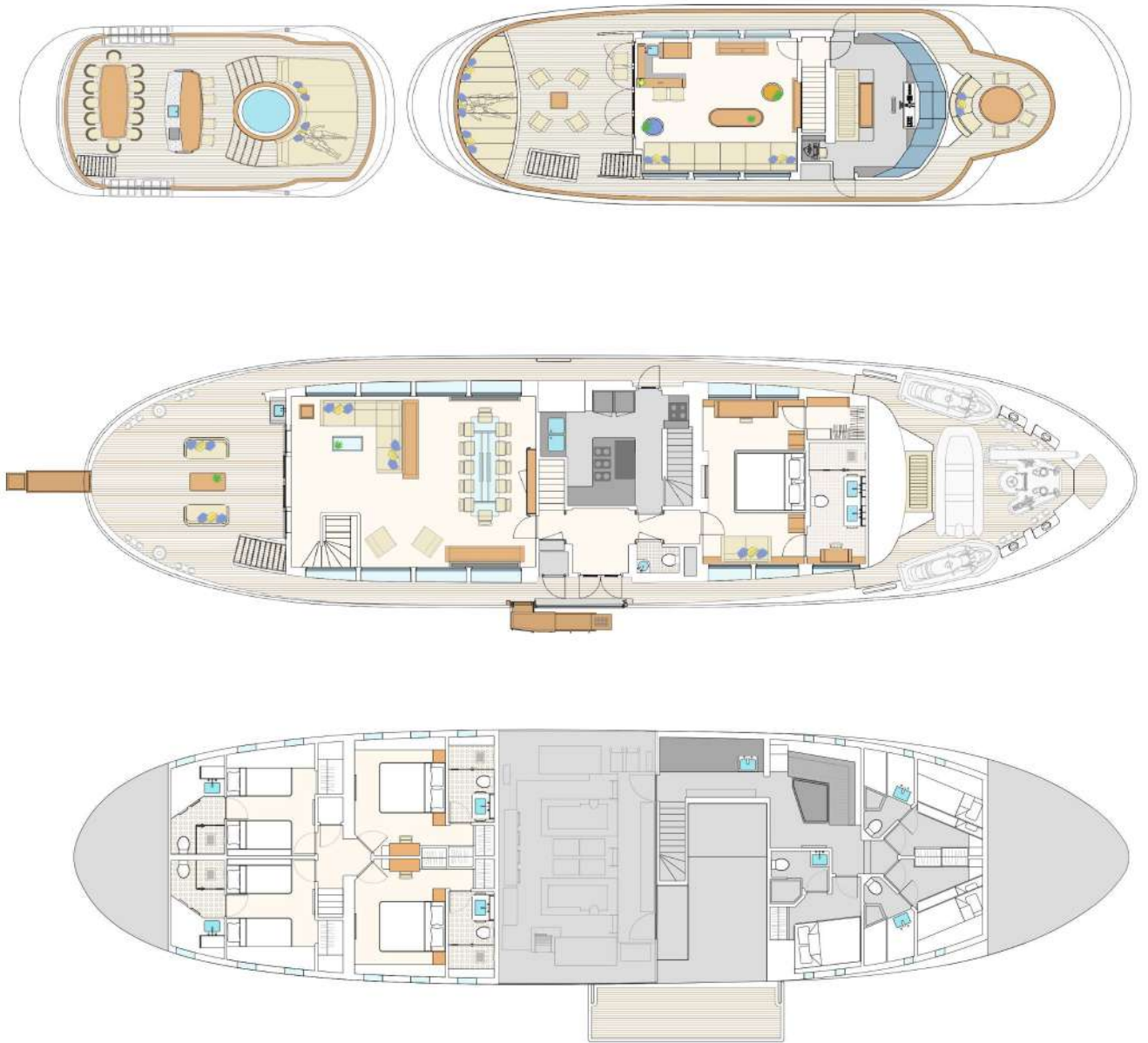


# TOYS

- 2 x Jobe safety helmets
- 2 x Side on safety helmets
- 1 x caperlan fishing rod
- 1 x Shimano stradic fishing rod
- 2 x Pen fishing rods
- 5 x Beach balls: (1 x wafer runner, 3 x inflatable mondo soccer balls, 1 x Duarig spectra series soccer ball)
- 5 x Mini eliminator squirt guns
- 1 x Sandcastle building set
- 2 x Nerf super soaker water guns
- 1 x Frisbee
- 1 x Inflatable swan
- 1 x Inflatable lounge donut
- 1 x Mares inflatable red diving buoy
- 2 x Waterproof ask travel bags
- 2 x Aqua glide cascade inflatable paddle boards
- 2 x Intex inflatable Kayaks
- 1 x Fun 3 connelly inflatable tube (large)
- 1 x Jobe tornado inflatable tube (large)
- 1 x Hotseat Jobe inflatable tube (small)
- 12 x Salvas fins
- 4 x Mares Manta fins
- 6 x Cressi fins
- 11 x Tribord fins
- 9 x Tribord and Cressi diving goggles
- 1 x Obrien wake board
- 1 x Slingshot wake board
- 1 x Obrien vortex water ski set
- 6 x Tribord wetsuits
- 2 x Kugoo electric scooters
- 2 x Sea bobs F5
- 1 x Waverunner x deluxe
- 1 x Seadoo spark trixs
- 1 x Williams 325 turbojet



# LAYOUTS







For More Info, [CLICK HERE](#)



breezeYachting.swiss





**EMMA KARANOVA**

Yacht Advisor

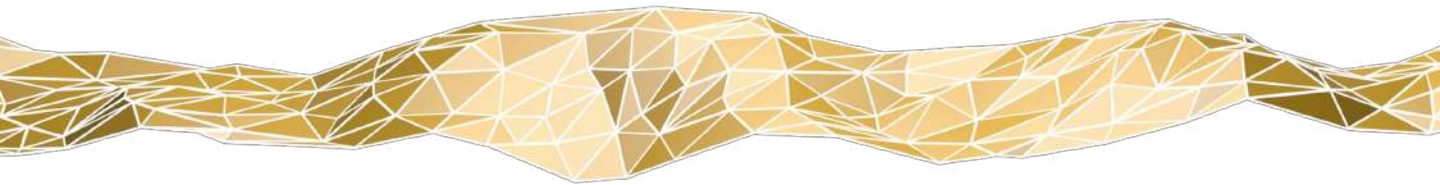
 WHATSAPP ME

m. +34 622 128 338

[emma@breezeyachting.swiss](mailto:emma@breezeyachting.swiss)

# breezeYachting.swiss

WE SPEAK YACHTING. LET'S TALK.



Switzerland ● Malta ● Spain ● Monaco

[www.breezeyachting.swiss](http://www.breezeyachting.swiss)

DISCLAIMER

The company offers the details of this vessel in good faith but cannot guarantee or warrant the accuracy of this information nor warrant the condition of the vessel. A buyer should instruct his agents, or his surveyors, to investigate such details as the buyer desires validated.

This vessel is offered subject to prior sale, price change or withdrawal without notice.