

breezeYachting.swiss



# Admiral 36m 'DISCO VOLANTE'

€2'390'000 incl. VAT | 36m | 1981/2024

Embark on an unparalleled yachting journey with Disco Volante, a classic gentleman's motor yacht that seamlessly fuses timeless elegance with modern opulence. This vessel, meticulously crafted by Admiral CN di Lavagna, has undergone extensive refits at renowned shipyards, ensuring she stands as a testament to tasteful updates and attentive maintenance.

The main saloon features a new L-shaped sofa, chaise lounge, armchairs, and a 70" TV with a mirror display, creating an inviting space for socializing and leisure. Accommodating up to 10 guests in five staterooms, including a full-beam master cabin, Disco Volante offers spacious and comfortable living arrangements. The owner's suite boasts a large walk-in wardrobe, bathtub, and shower, ensuring a luxurious retreat.

The outdoor spaces are designed for effortless pleasure, from the expansive aft deck with al fresco dining for 12 to the flybridge offering a substantial table, chaise lounges, and convenient amenities. Disco Volante is powered by triple 1,420 hp Caterpillar diesel engines fitted in 2000, allowing her to reach a maximum speed of 27 knots effortlessly, delivering both high-speed performance and classic grace.





# SPECIFICATIONS

<b>Builder:</b>	Admiral
<b>Model:</b>	36m
<b>Year Built:</b>	1981
<b>Refit:</b>	2024
<b>Hull/Superstructure:</b>	Wood (Mahogany)
<b>Deck material:</b>	Teak
<b>Flag:</b>	Malta
<b>Length overall:</b>	36 m
<b>Beam:</b>	7.6 m
<b>Draft:</b>	2.7 m
<b>Gross tonnage:</b>	205 GT
<b>Guests:</b>	10
<b>Staterooms:</b>	5
<b>Heads</b>	6
<b>Crew:</b>	7
<b>Crew Cabins:</b>	3 + 1
<b>Engines:</b>	3 x CAT 3412 DITA
<b>Engine Hours:</b>	3530h / 3503h / 3523h (as of March 2024)
<b>Total Power:</b>	3 x 1420 HP
<b>Generators:</b>	40 kW Kohler + 28 kW Kohler
<b>Generator Hours:</b>	7300h / 1650h (as of March 2024)
<b>Cruising Speed:</b>	22 knots
<b>Maximum Speed:</b>	27 knots
<b>Range:</b>	450 nm @ 20 kn
<b>Fuel tank:</b>	14,000 l
<b>Fresh water tank:</b>	3,000 l
<b>Black water tank:</b>	300 l
<b>Gray water tank:</b>	500 l



# KEY POINTS

- Over 1 million euros invested in recent refits
- Contemporary interior renovations
- Full-beam owner's suite
- Expansive outdoor spaces for al fresco dining and leisure
- Pleasure RINA
- Maximum speed of 27 knots



# LIST OF WORKS

During the extensive refit from 2022 to 2024 at Castellammare di Stabia shipyard, Disco Volante underwent significant enhancements, elevating her status as a vessel of contemporary elegance::

- Replacement of 25 linear meters of wooden hull planks
- Installation of new anodes and antifouling
- Meticulous polishing of the hull, deck, and superstructure
- Thorough sanding and polishing of teak surfaces
- Overhaul of essential systems, including engines, generators, and all onboard systems
- Installation of new water tanks
- Refreshing of fabrics throughout the vessel
- Addition of new furniture and accessories in the salon
- Inclusion of brushed brass taps and shower accessories
- Installation of new flooring in the salon
- Addition of new fenders, mooring lines, and sea valves
- Issuance of RINA Class certification in 2022.







breezeYachting swiss



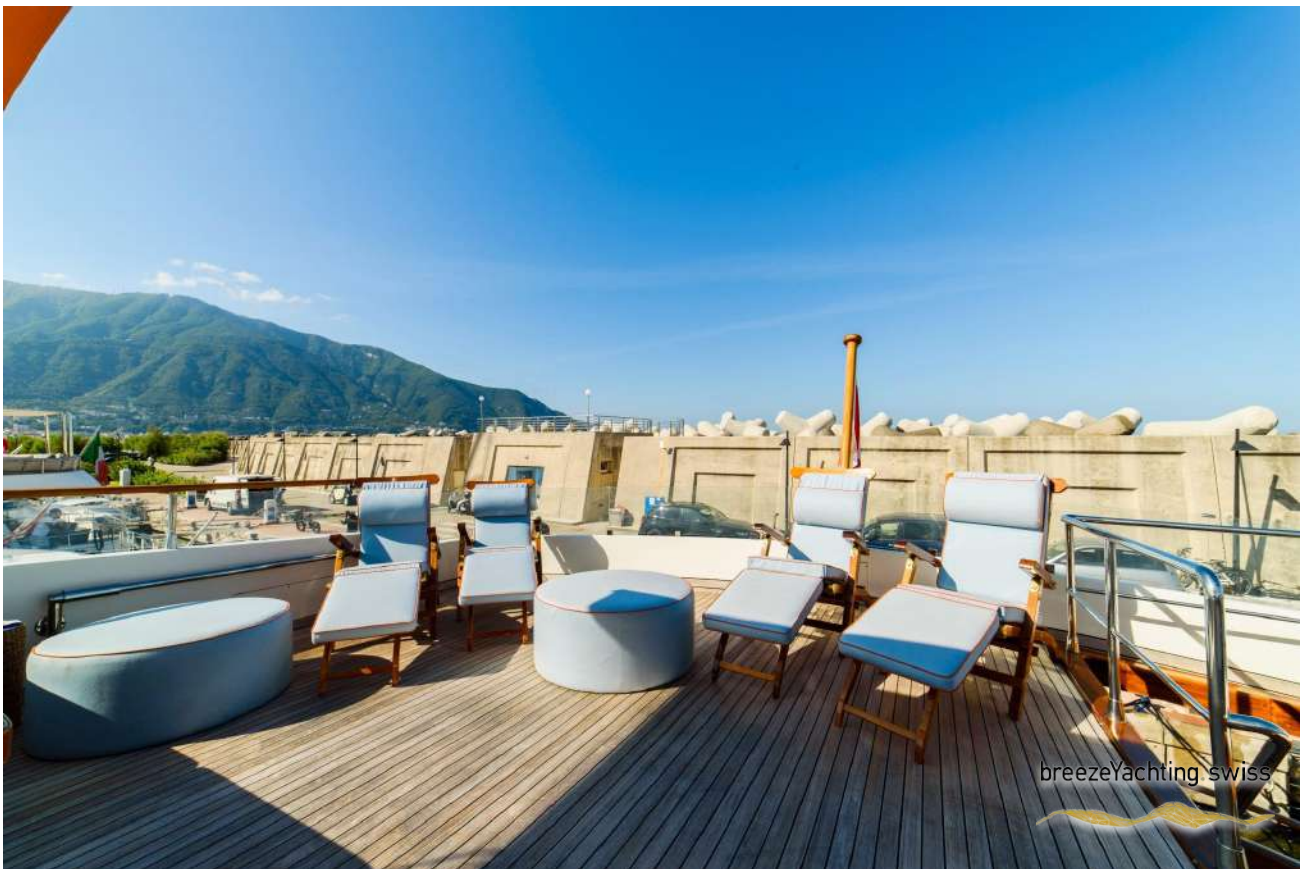




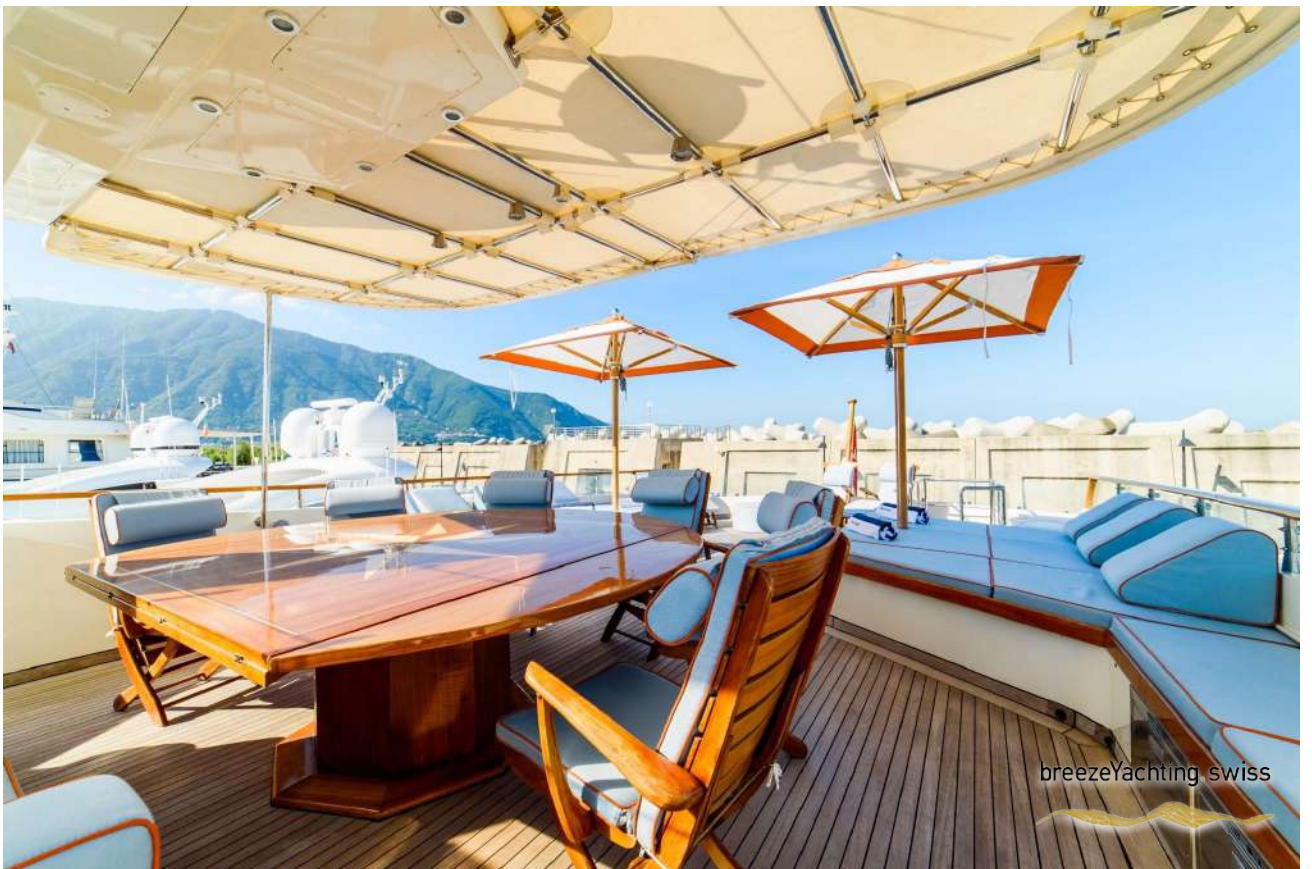








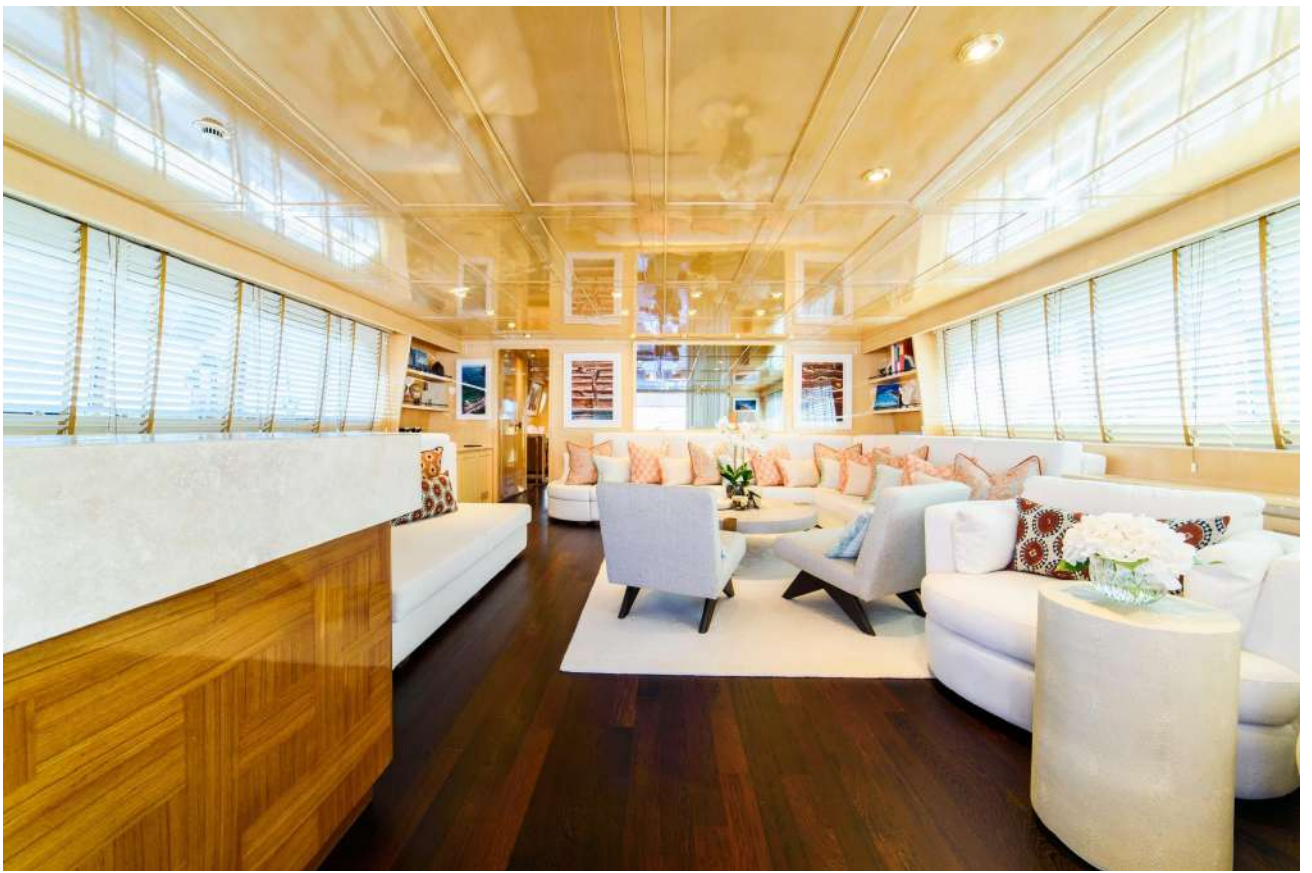




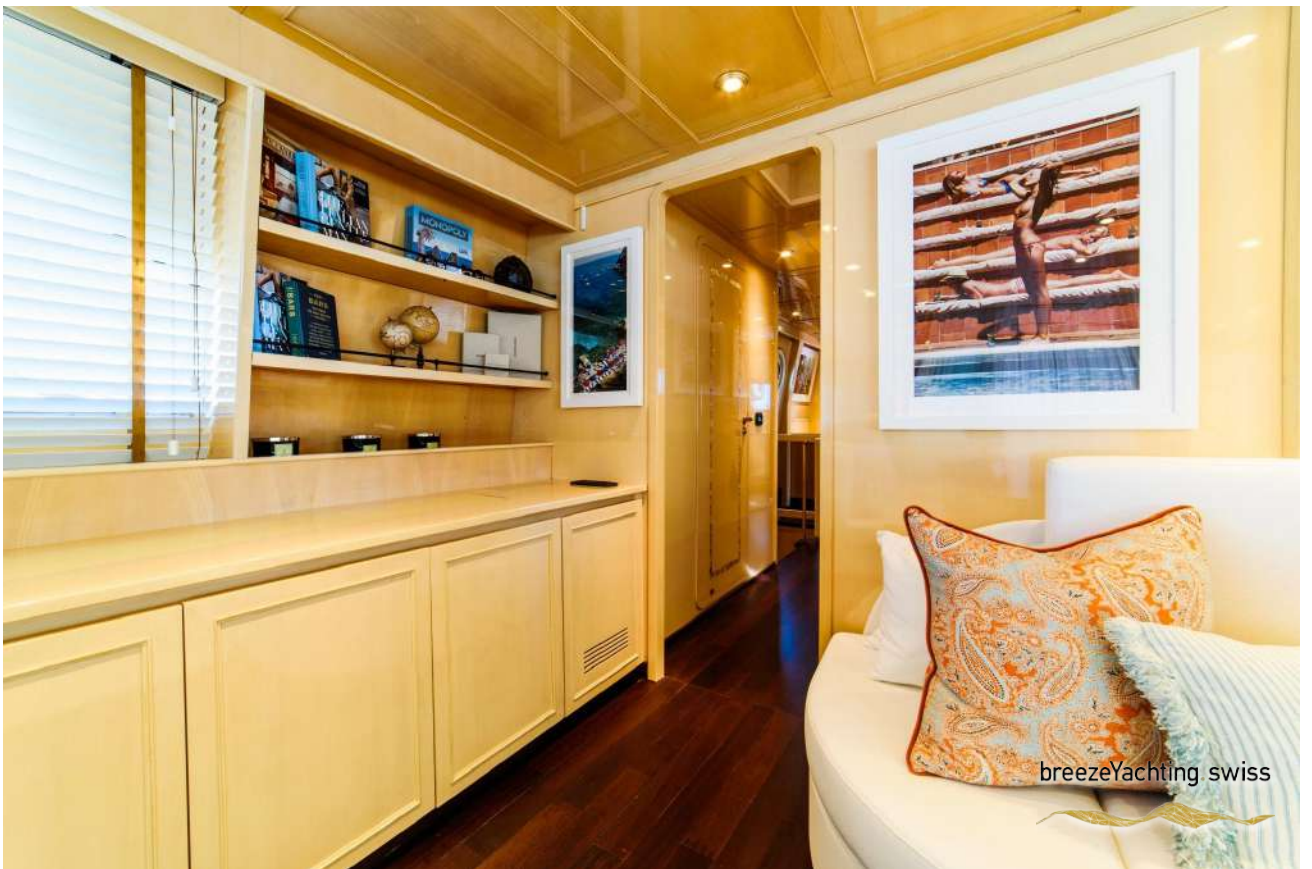








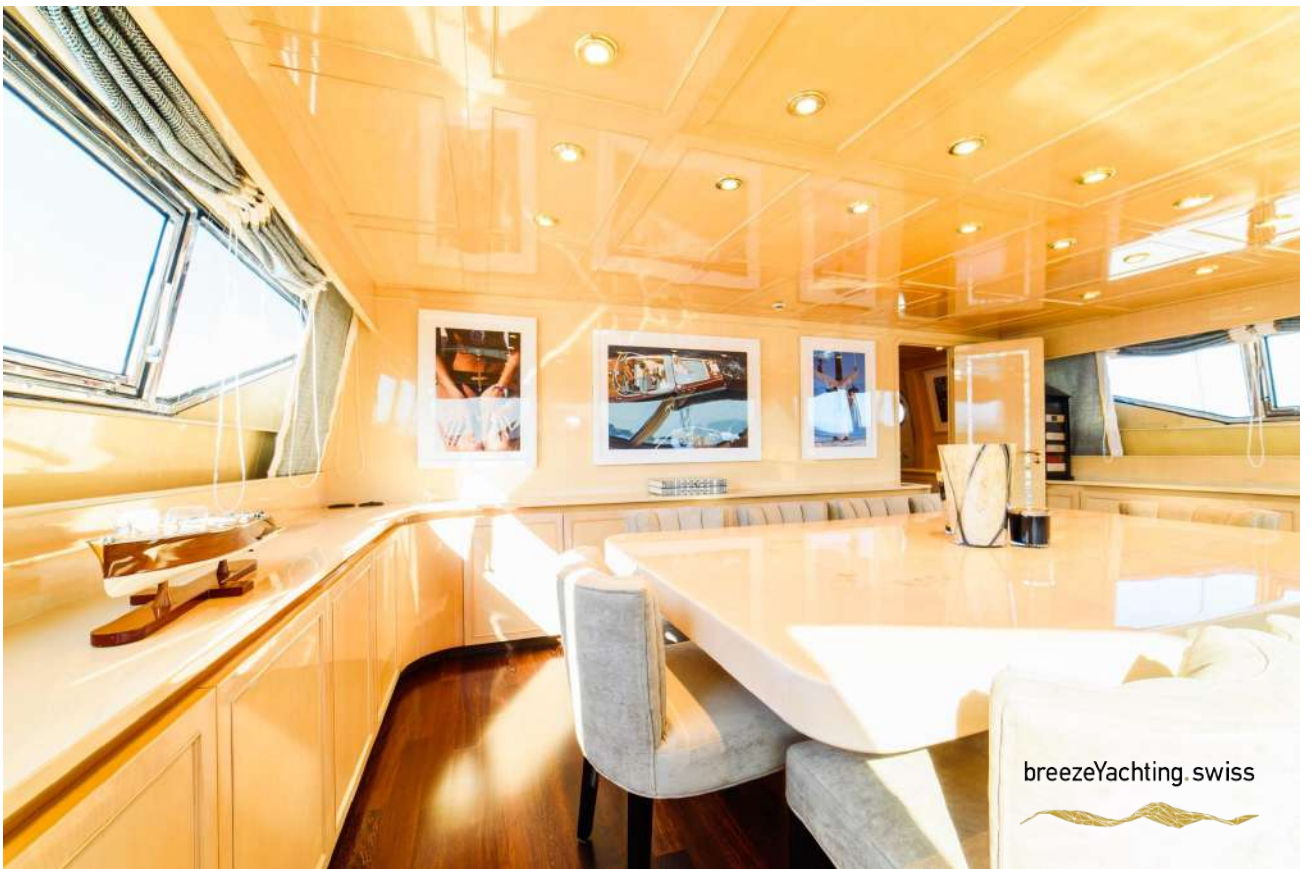




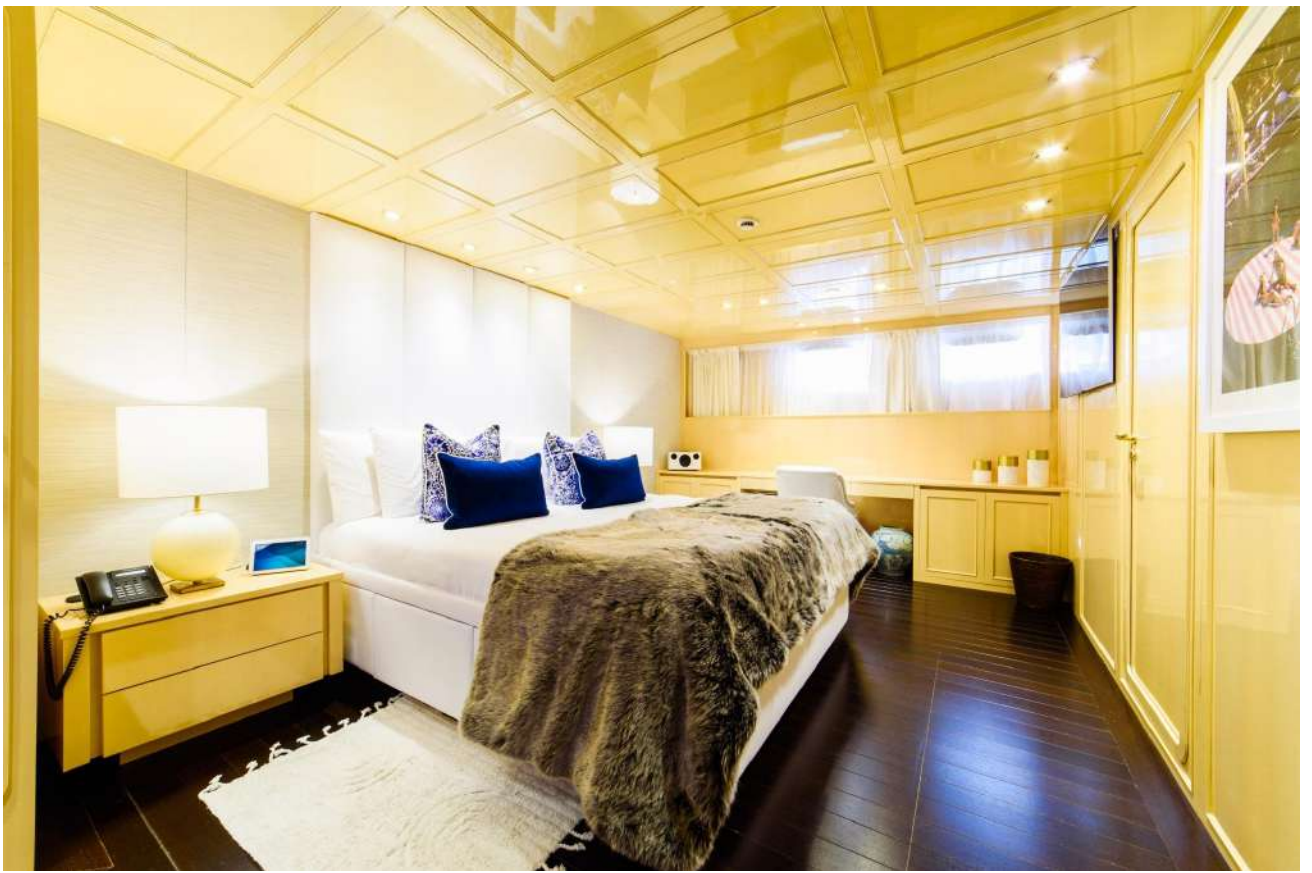
























breezeYachting.swiss





# EQUIPMENT

## Navigation and communication (2022-2023)

- Magnetic Compass: Fratelli Fuselli Genova
- Compass: Furuno
- Automatic Pilot: Simrad APT 70 MK2 with display on main deck and fly bridge
- SIMRAD integrate system: 3 x 19' SIMRAD touch display, external trackball, card reader
- Echo sounder: SS60 SIMRAD
- Log: Sunlog SL
- Wind Instruments: Simrad
- VHF: Class A FM8005
- EPIRB: Sailor SGE 406
- SART: Jotron
- GPS: 2 x Furuno
- Radar: Furuno NAVNET 90 HZ
- Radar: Furuno FAR 2117
- AIS: ATB1 Class B
- SSB: Furuno

## Ancillary Equipment

- Steering equipment: Shipyard
- Rudder Angle Indicator: VDO
- Bow thruster: Wesmar
- Stabilizers: Wesmar
- Fuel filters: Racor
- Fire/Bilge pump: 1 + 2 Gianneschi
- Boilers: 2 x 100 litres Gianneschi
- WC's: Jets vacuum system
- Air Conditioning: Frigomar

## Auxiliary Machinery & Electrical systems

- GENERATORS: 1 x 50 kW Kohler
- Emergency generator: 1 x 28 kW Kohler
- Electricity: Codecasa/Elettroimpianti
- Shore power: 1 x 120 kVA 50 Kz
- Batteries: 1.200 mAh



# EQUIPMENT

## Domestic Equipment

- 1 x MIELE Hob new 2022
- 1 x 60 cm Miele microwave oven 3 functions
- 1 x Miele dishwasher
- 3 x Miele fridge
- 1 x Gaggenau wine cave
- 4 x Freezer
- 2 x Miele washer
- 1 x Miele dryer

## Deck Equipment

- ANCHOR WINDLASS: 2 x Sanguineti 3500 W
- Aft capstans: 2 x Quicksilver
- Ground Tackle: 2 x 200 Kg galvanized steel HPP anchors
- Chain: 2 x shackles 16mm galvanized chain
- Boat Crane and Davits: 1 x Sanguineti 400 kg
- Passarella: Pincraft
- Searchlight: Sunshine

## Safety and Security

- Fire fighting: Mini Max C=2
- Security: CCTV + Security system in engine room
- Ship's safe: Captain's cabin, Master stateroom

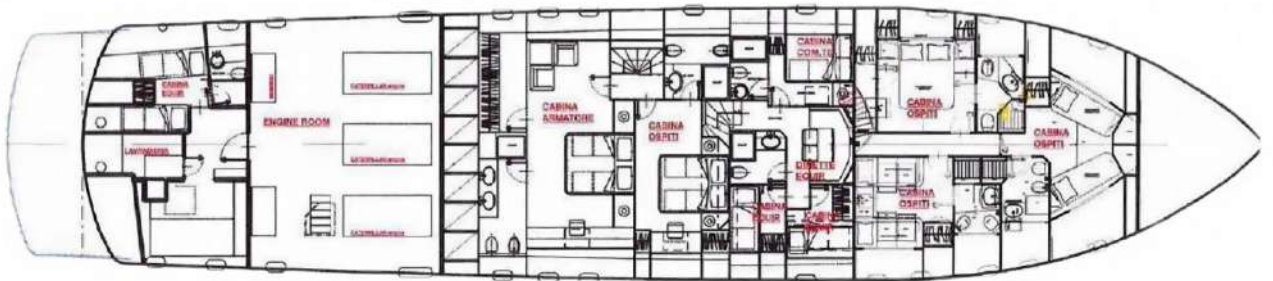
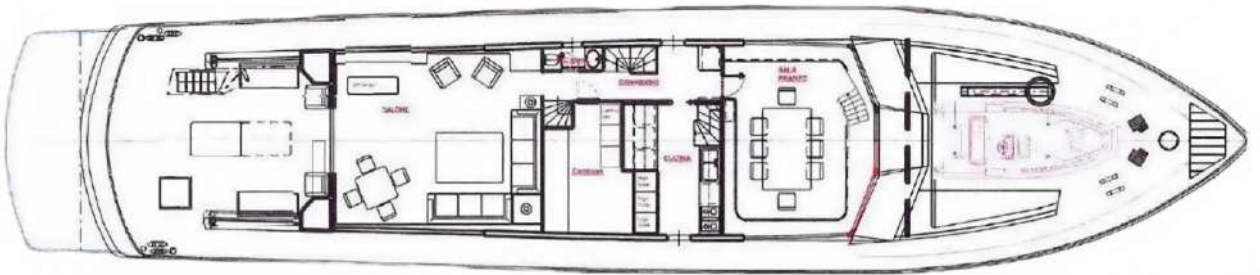
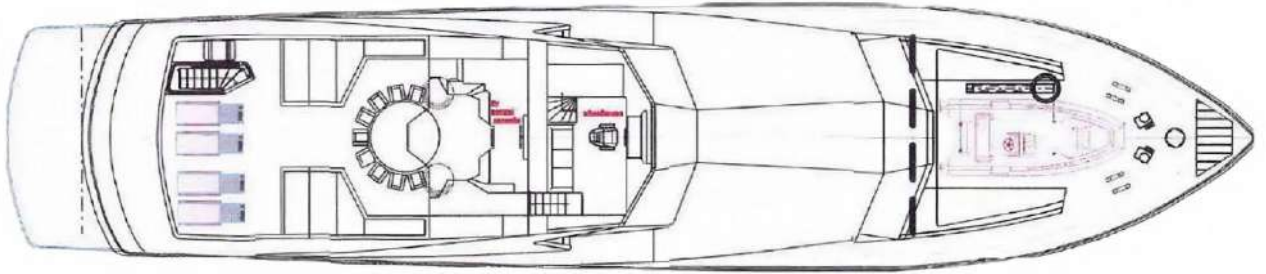
## Tender

- 1 x 5.6m MARSEA with new 2022 100 HP Yamaha





# LAYOUTS





For More Info, [CLICK HERE](#)



breezeYachting.swiss







**INNA VOLOSHINA**

Yacht Advisor

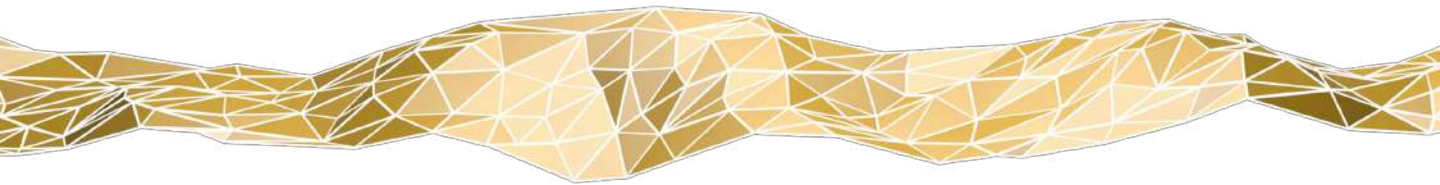
 WHATSAPP ME

m. [+34 603 475 840](tel:+34603475840)

[iv@breezeyachting.swiss](mailto:iv@breezeyachting.swiss)

# breezeYachting.swiss

WE SPEAK YACHTING. LET'S TALK.



Switzerland ● Malta ● Spain ● Monaco

[www.breezeyachting.swiss](http://www.breezeyachting.swiss)

#### DISCLAIMER

The company offers the details of this vessel in good faith but cannot guarantee or warrant the accuracy of this information nor warrant the condition of the vessel. A buyer should instruct his agents, or his surveyors, to investigate such details as the buyer desires validated.

This vessel is offered subject to prior sale, price change or withdrawal without notice.