

breezeYachting.swiss

An aerial, top-down view of a white and tan motor yacht named 'EUPHORIA II' by Mayra. The yacht is moving through dark blue water, leaving a white wake. The deck is visible, featuring a red circular hatch cover, a large white rectangular structure, and a cockpit area with red seating. The yacht's hull is white with tan-colored deck panels.

# Mayra 50m 'EUPHORIA II'

Low EUR 245'000 / High EUR 270'000 + expenses



# KEY POINTS

- Sleeps up to 12 guests in 5 cabins
- Gym and jacuzzi on the skydeck
- Exterior and Interior design by renowned Ken Freivokh
- Stabilizers at anchor and underway



# SPECIFICATIONS

<b>Builder:</b>	Mayra
<b>Model:</b>	50m
<b>Model Year:</b>	2016
<b>Hull/Superstructure:</b>	Steel
<b>Designer:</b>	Ken Freivokh Design
<b>Length overall:</b>	49.56 m
<b>Beam:</b>	8.45 m
<b>Draft:</b>	2.7 m
<b>Guest Cabins:</b>	5
<b>Guest Cabin Configuration:</b>	Master, 2 x VIP, 2 x Twin with 2 Pullman
<b>Heads:</b>	7
<b>Guests:</b>	12
<b>Crew:</b>	9 in 5 cabins (2 x Twin + 1 x Captain's cabin + Crew mess)
<b>Engines:</b>	2 x CAT C32 ACERT
<b>Engine power:</b>	2 x 1600 HP
<b>Engine hours:</b>	Prt 1064 h; Stbd 1095 h (02/2024)
<b>Max Speed:</b>	16 kn
<b>Cruising Speed:</b>	12 kn
<b>Range:</b>	4500 nm
<b>Consumption:</b>	300 L/h @ 12 kn































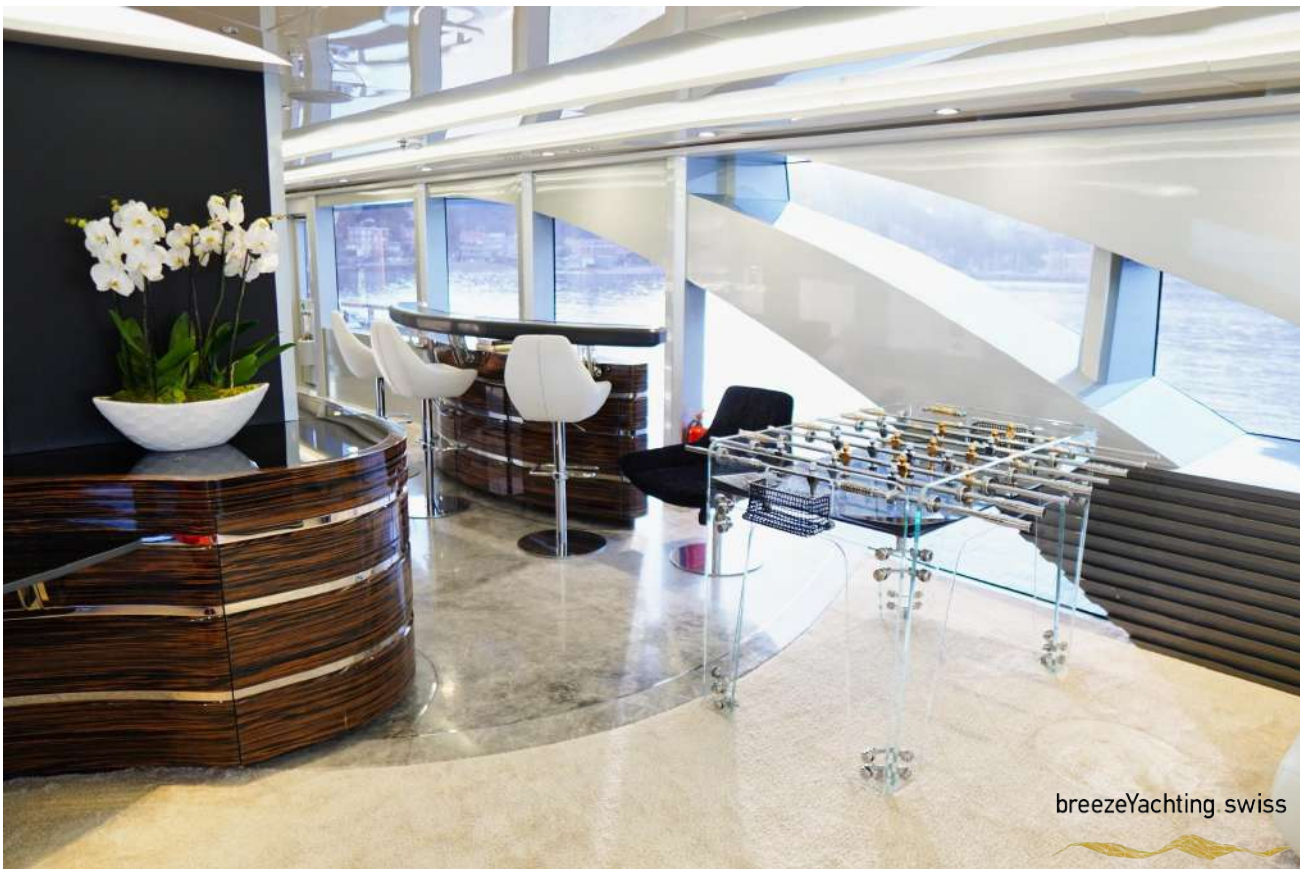




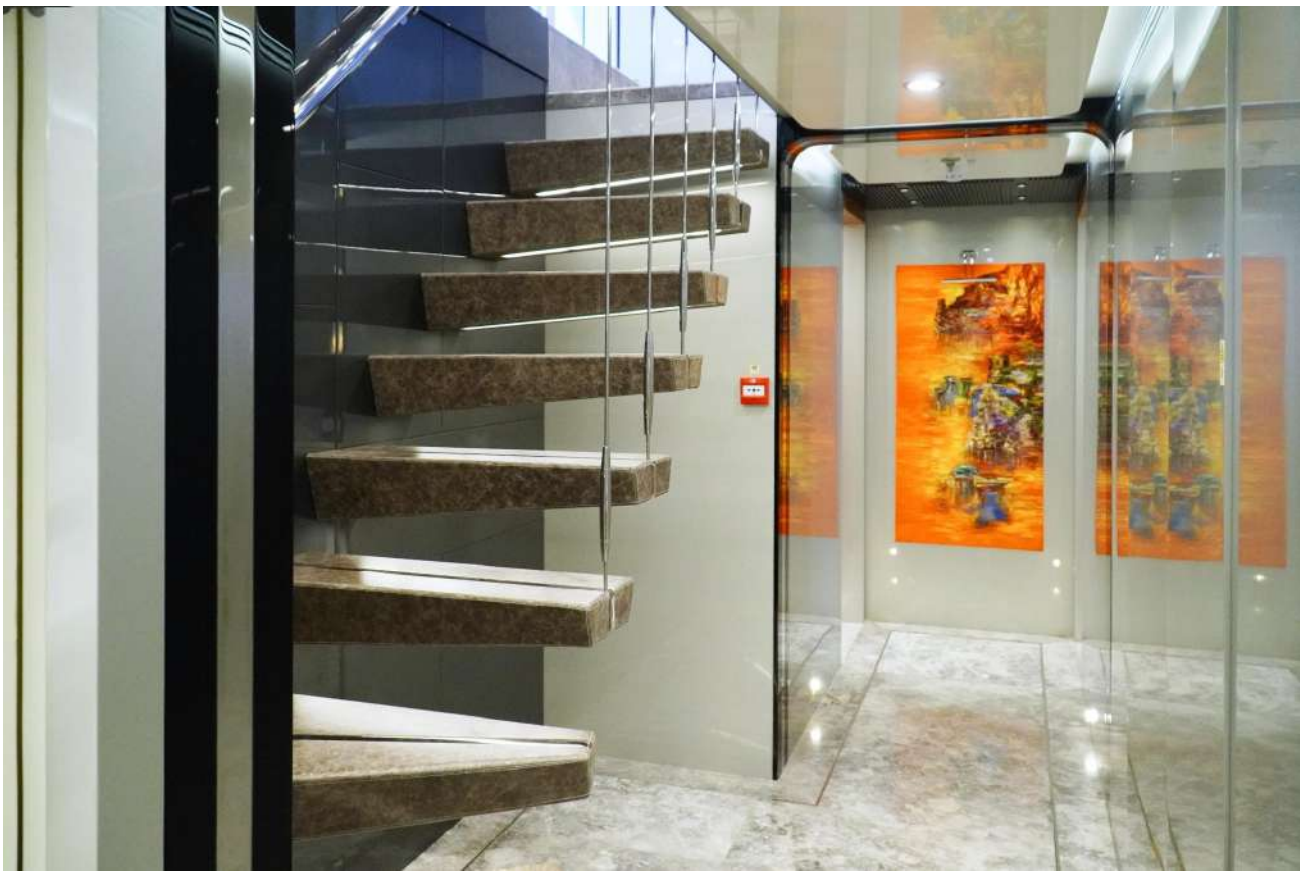




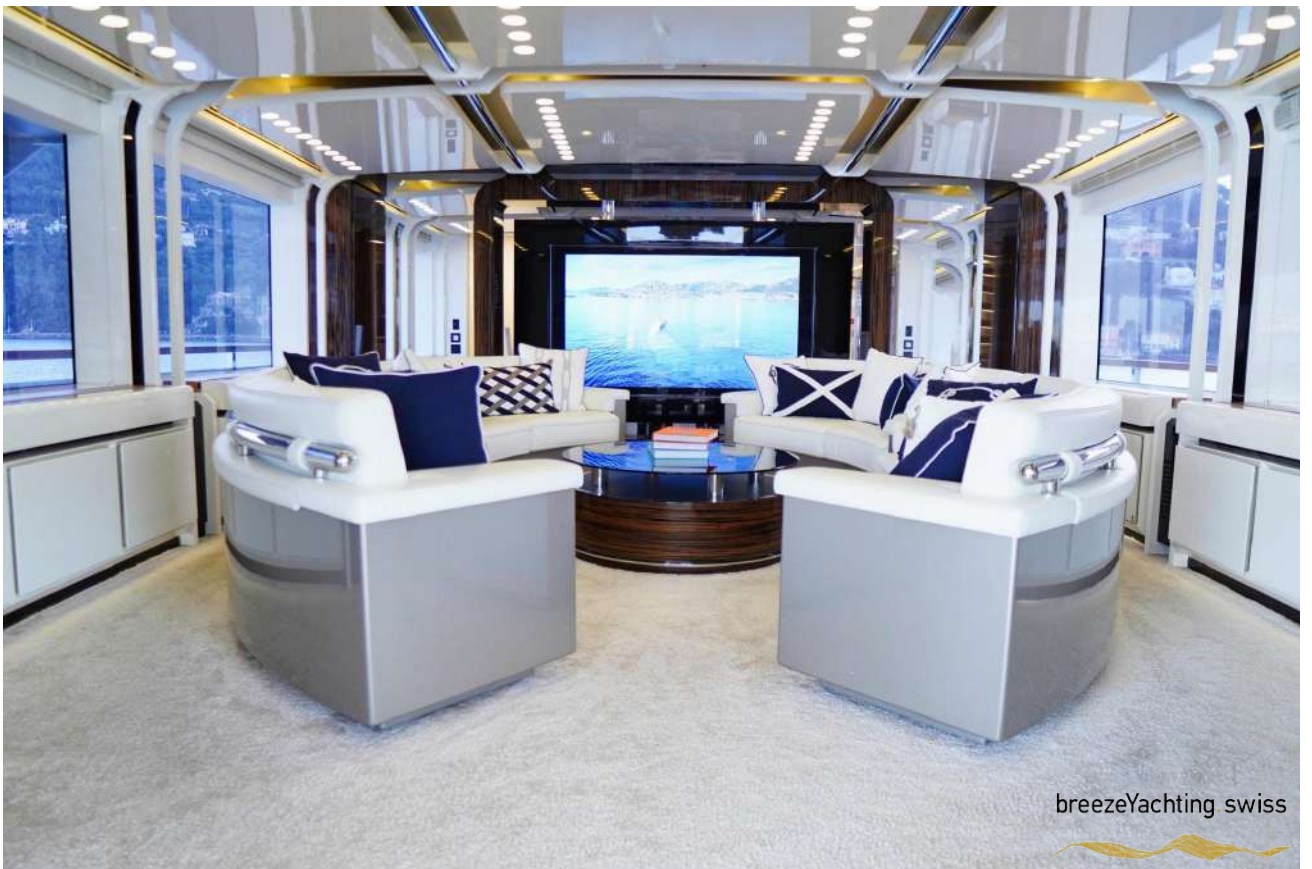




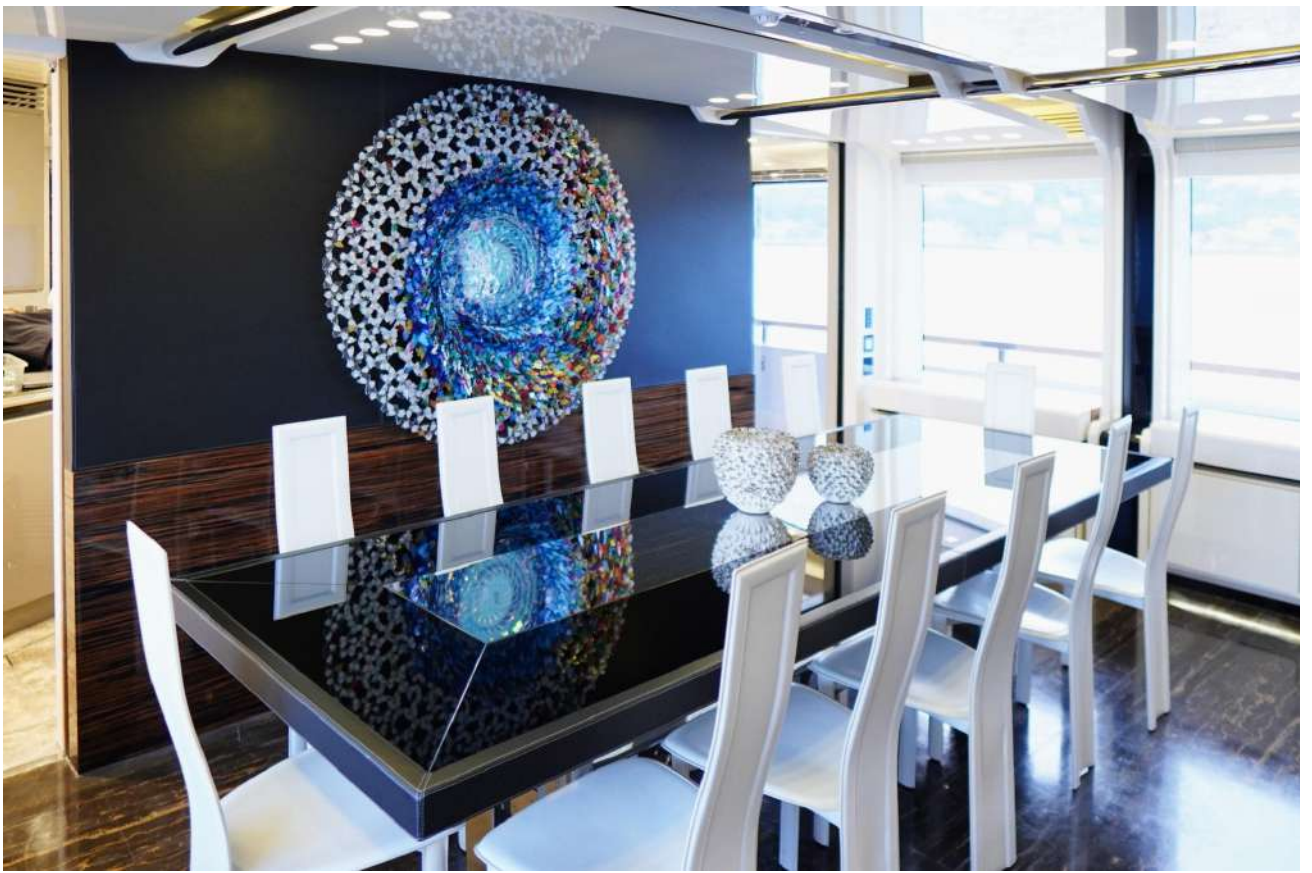












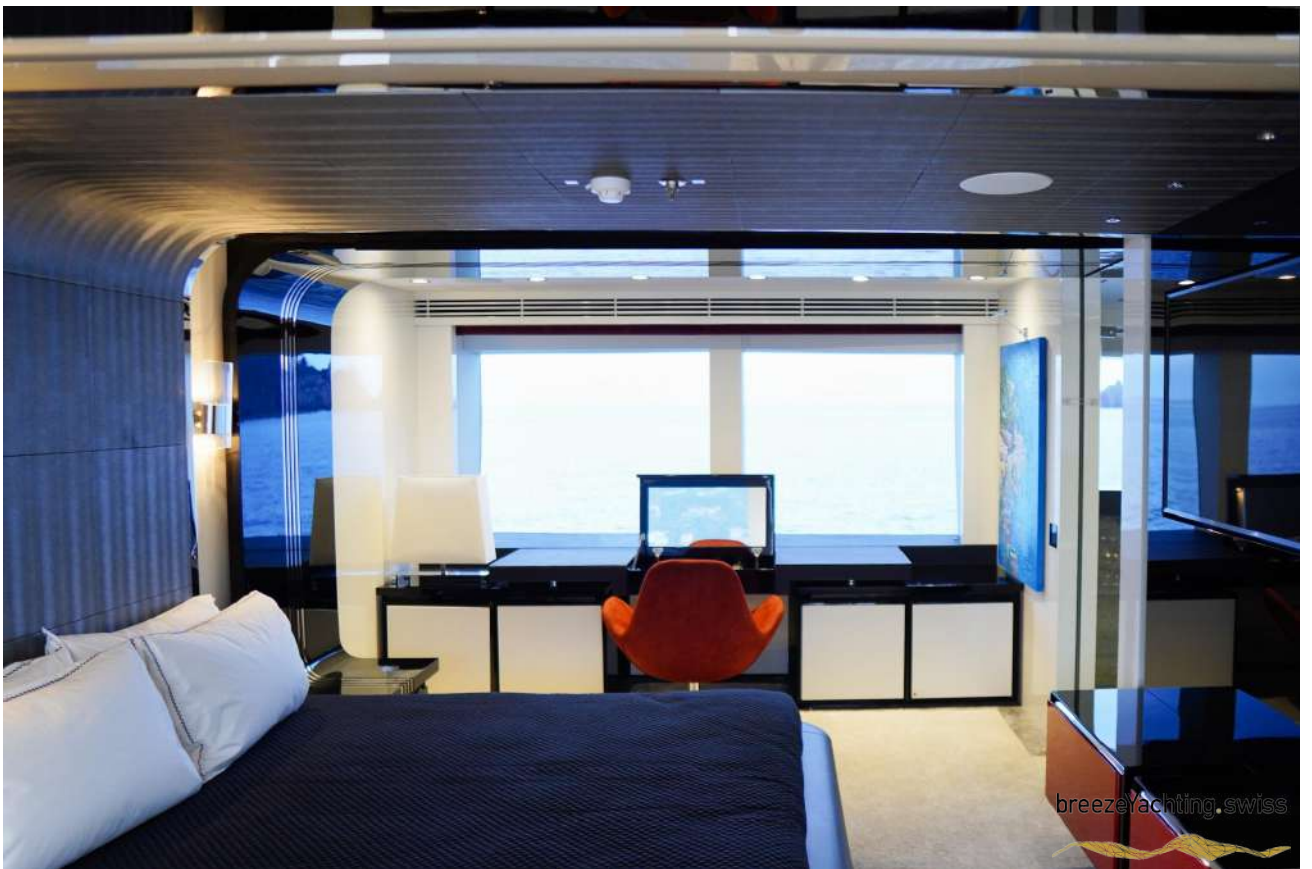


# GUEST ACCOMMODATION

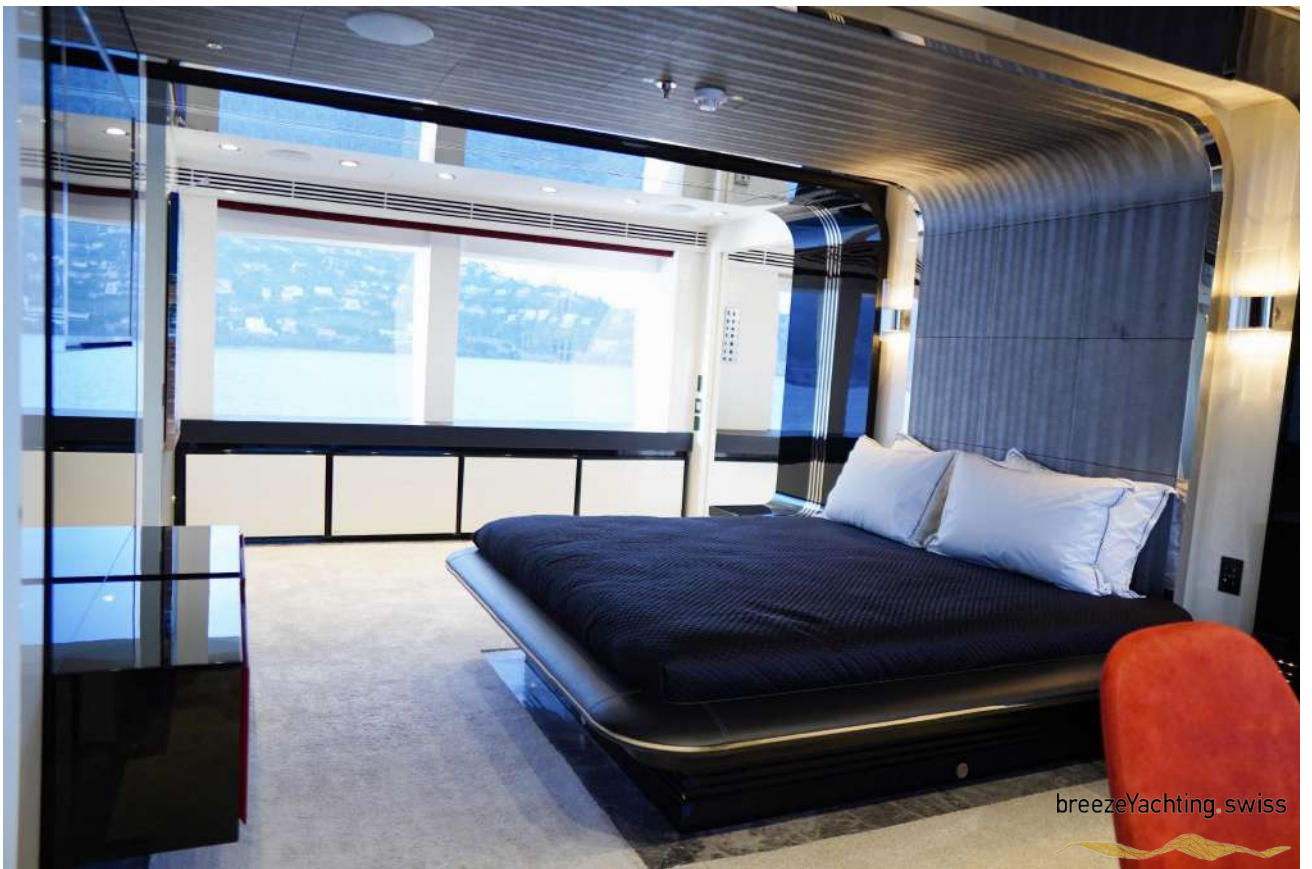
"EUPHORIA II" has a four-deck layout and can accommodate up to 12 guests in five sumptuous staterooms, including a full-beam master suite on the main deck with a private office, two VIP suites and two twin cabins with pullman on the lower deck.













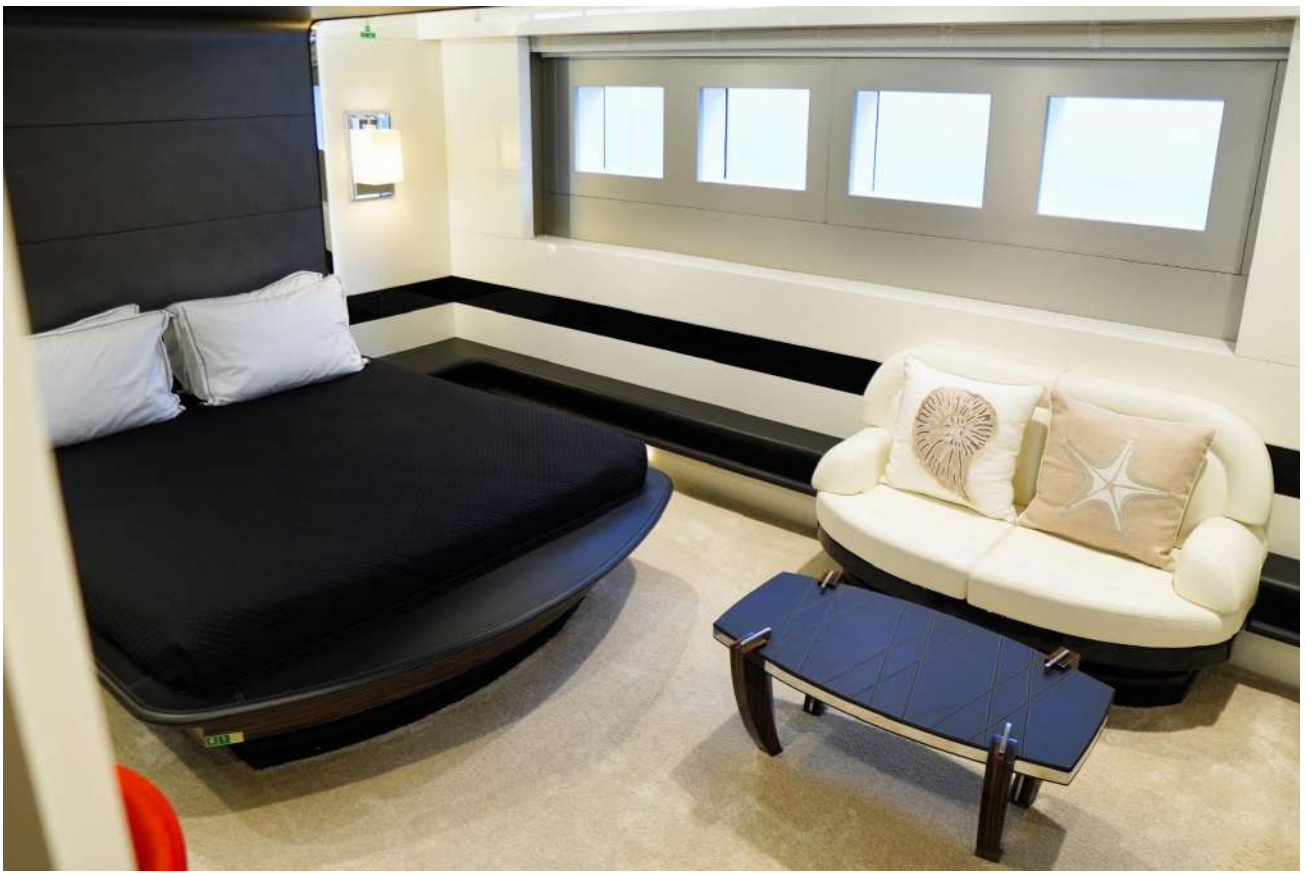


































# TENDER & TOYS

- Williams Tender 625
- 2 x F5 SeaBob
- 2 x inflatable kayaks
- 2 x inflatable paddle boards
- Wake board
- Water ski
- E-foil surf
- Donuts



# LAYOUTS





